



P.O. Box 65  
 No. 4 Executive Circle  
 Arkadelphia, AR 71923  
 (870) 246-5757  
 FAX 1-870-367-8424  
 E-mail: [arkadelphia@kingwoodforestry.com](mailto:arkadelphia@kingwoodforestry.com)



Other Kingwood  
 Locations:  
 P.O. Box 1290  
 145 Greenfield Drive  
**Monticello, AR 71657**  
 (870) 367-8567  
 FAX 1-870-367-8424

P.O. Box 5887  
 4414 Galleria Oaks  
**Texarkana, TX 75505**  
 (903) 831-5200  
 FAX 1-870-367-8424

## NOTICE OF TIMBER SALE

**Wolfe Farm Tract – Clark County, Arkansas**

**Bid Date: Friday, May 8, 2026 @ 10:00 a. m.**

Kingwood Forestry Services has been authorized to solicit bids for the sale of all merchantable timber on 40 acres, plus selectively marked pine sawtimber within 7-acre Streamside Management Zone (SMZ), plus pay-as-cut per-ton pricing for 1<sup>st</sup> thinning on 22.8 acres, more or less, in Clark County, Arkansas. See attached maps.

**Location:** Timber to be sold is on land described as Parts of Sections 12 and 13, Township 9 South, Range 21 West, in Clark County, Arkansas (Wolfe Farm Tract – see attached maps).

**Timber to be Sold:** All merchantable timber within the designated clearcut sale area is to be sold. Timber sale boundaries are marked with pink Timber Harvest Boundary (THB) flagging and blue paint. SMZ is delineated with orange SMZ flagging and blue paint; pine trees to be sold within SMZ are marked with two (2) spots of blue paint – once at ground level and once at eye level or above. Based on inventory of merchantable timber within clearcut sale area conducted by Kingwood Forestry in March 2026, estimated tree counts and timber volumes are as follows (volume report is attached):

±40 CLEARCUT ACRES		
<b>Pine Sawtimber:</b>	<b>1,848 Trees</b>	<b>3,331 Tons</b>
<b>Pine Chip N' Saw:</b>	<b>32 Trees</b>	<b>17 Tons</b>
<b>Pine Pulpwood:</b>	<b>112 Trees</b>	<b>42 Tons</b>
<b>Pine Topwood:</b>	<b>----</b>	<b>294 Tons</b>
<b>Red Oak Sawtimber:</b>	<b>170 Trees</b>	<b>246 Tons</b>
<b>White Oak Sawtimber:</b>	<b>40 Trees</b>	<b>53 Tons</b>
<b>Miscellaneous Sawtimber:</b>	<b>100 Trees</b>	<b>148 Tons</b>
<b>Hardwood Pulpwood:</b>	<b>1,813 Trees</b>	<b>815 Tons</b>
±4.0 ACRES OF SELECTIVELY MARKED SAWTIMBER		
<b>Pine Sawtimber:</b>	<b>21 Trees</b>	<b>55 Tons</b>

Due to variations in cruising methods, utilization standards, and scaling practices, tree counts and volume estimates cannot be guaranteed. Marked tree count, however, is guaranteed to be accurate. Volume report for clearcut sale area is attached. Volume report for marked timber within SMZ is available online and / or upon request.

Based on our estimates pine sawtimber to be sold within clearcut sale area averages 17.8" DBH.

**Method of Sale:** Timber will be sold on the basis of lump sum sealed bids. A bid form is attached. Bids will be opened at **10:00 a.m., Friday, May 8, 2026**, at the Kingwood Forestry office at #4 Executive Circle, Arkadelphia. Buyers submitting bids are welcome to attend the bid opening. Mailed bids should be addressed to Kingwood Forestry Services, Inc., P.O. Box 65, Arkadelphia, AR 71923, with **"Wolfe Farm Tract Timber Sale"** clearly marked in the lower left corner of the envelope. Telephone bids from buyers known to Kingwood will be accepted; however, it is preferred that bids be delivered by fax to 870-367-8424 or by e-mail to [arkadelphia@kingwoodforestry.com](mailto:arkadelphia@kingwoodforestry.com). Faxed / e-mailed bids will be immediately acknowledged. Please await confirmation that your faxed / email bid has been received. Anyone submitting a bid for the purchase of the timber will be provided with a summary of the bid results.

**Conditions of Sale:**

1. The landowner reserves the right to accept or reject any bid.
2. A performance deposit of \$2,000.00 is to be paid to Kingwood Forestry Services Escrow and **will be held until all work is completed satisfactorily including 1<sup>st</sup> thinning.**
3. Conveyance will be by conventional Forest Products Sale Contract providing twenty-four (24) months from date of contract execution to harvest and remove the designated timber.
4. Buyer must notify Kingwood Forestry Services, Inc. two (2) days prior to start of harvesting operation.
5. Logging damage must be held to a minimum. Compliance with Best Management Practices for Arkansas will be required.

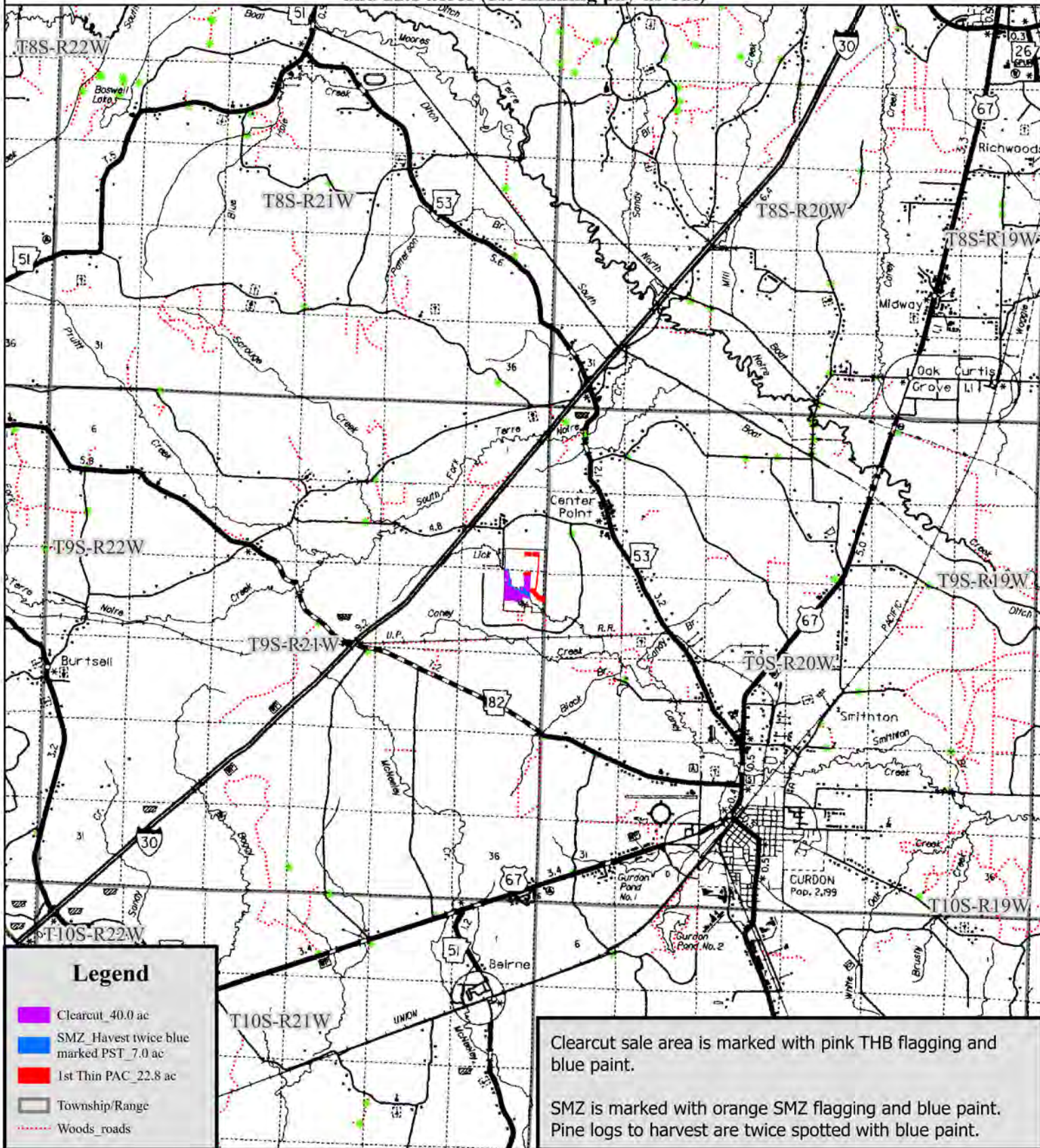
For more information, contact Jimmy Don Thomas or Phil Wright of Kingwood Forestry Services, Inc. at 870-246-5757 or by e-mail to [Arkadelphia@kingwoodforestry.com](mailto:Arkadelphia@kingwoodforestry.com)

# NOTICE OF TIMBER SALE

## "Wolfe Farm Tract"

Pt. Sec. 12 & 13, T9S, R21W, Clark County, Arkansas

containing 40.0 acres (lump sum clearcut) and 7.0 acres (lump sum twice blue marked P sawtimber),  
and 22.8 acres (1st thinning pay-as-cut)



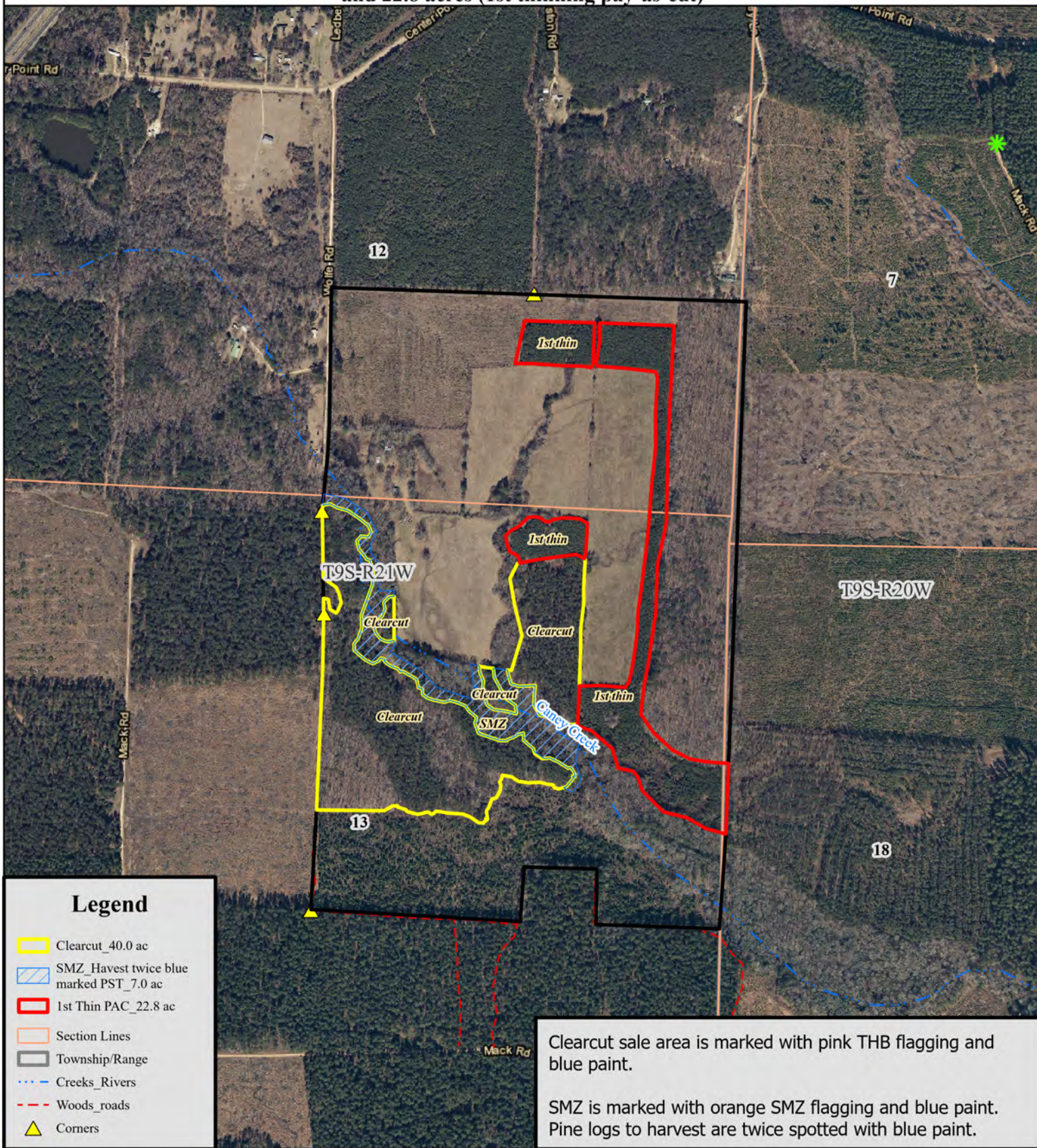
Drawn By: JDT

# NOTICE OF TIMBER SALE

## "Wolfe Farm Tract"

Pt. Sec. 12 & 13, T9S, R21W, Clark County, Arkansas

containing 40.0 acres (lump sum clearcut) and 7.0 acres (lump sum twice blue marked P sawtimber),  
and 22.8 acres (1st thinning pay-as-cut)



### Legend

- Clearcut\_40.0 ac
- SMZ\_Harvest twice blue marked PST\_7.0 ac
- 1st Thin PAC\_22.8 ac
- Section Lines
- Township/Range
- Creeks\_Rivers
- Woods\_roads
- Corners

Clearcut sale area is marked with pink THB flagging and blue paint.

SMZ is marked with orange SMZ flagging and blue paint. Pine logs to harvest are twice spotted with blue paint.

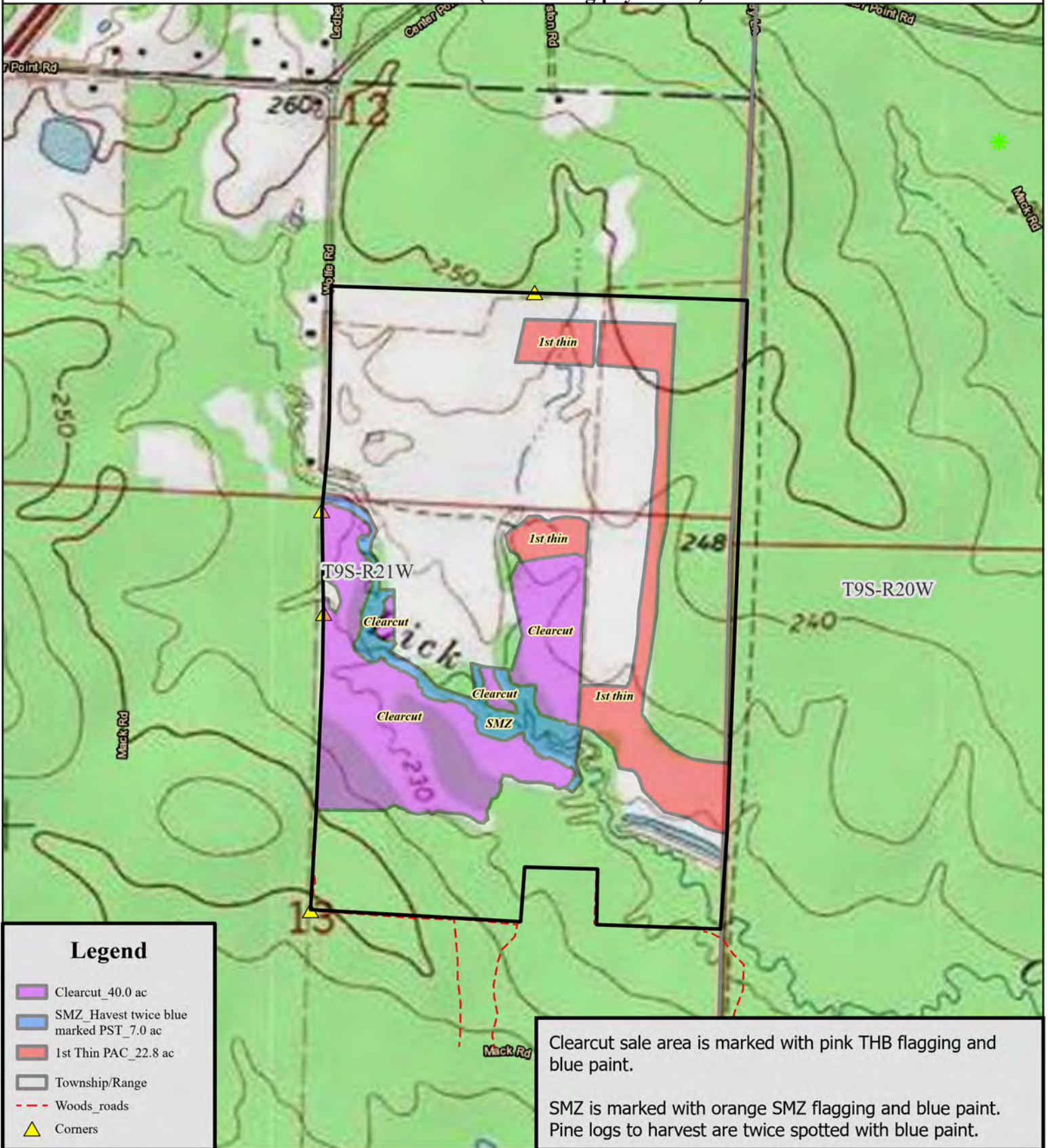
0 0.13 0.25 Miles

Drawn By: JDT

# NOTICE OF TIMBER SALE

## "Wolfe Farm Tract"

Pt. Sec. 12 & 13, T9S, R21W, Clark County, Arkansas  
containing 40.0 acres (lump sum clearcut) and 7.0 acres (lump sum twice blue marked P sawtimber),  
and 22.8 acres (1st thinning pay-as-cut)



0 0.13 0.25  
Miles

Drawn By: JDT

### Stand Summary by Group, Product and DBH

Sampling Method:	Plot
BAF / Plot Size:	0.1
# Plots/points:	40
Stand Acres:	40.0
Cruiser:	JDT
Template:	GENERIC

Tract Name:	<b>Wolfe Farm - Clearcut</b>
Stand ID:	ClearcutSaleArea
Location:	Clark County AR
Date Cruised:	04/07/2026
Sawlog Vol Units:	Doyle

Site Index Species:	Planted Loblolly
Base Age:	25
Site Index:	0.0
# SI Samples:	0
Avg Age:	0
Avg Ht:	0.0



### Pine

	Stand Total					Per Acre					Avg. Tree		Avg. Heights		
	DBH	Trees	PW Tons	Saw Tons	MBF	BA	Trees	PW Tons	Saw Tons	BF	Tons/Tree	BF/Tree	Hs	Hp	Hm
Pulpwood	7	56.1	14.0			0.37	1.4	0.35			0.249			46.9	60.5
	9	34.0	14.6			0.37	0.8	0.37			0.430			54.4	66.5
	11	22.7	13.6			0.37	0.6	0.34			0.598			62.6	74.5
<b>Pulpwood Total</b>		<b>112.8</b>	<b>42.2</b>			<b>1.12</b>	<b>2.8</b>	<b>1.05</b>			<b>0.374</b>			<b>52.3</b>	<b>65.1</b>
Chip-N-Saw	11	32.7	1.6	17.3	1.6	0.54	0.8	0.04	0.43	38.93	0.530	47.583	42.9	58.5	69.8
	<b>Chip-N-Saw Total</b>		<b>32.7</b>	<b>1.6</b>	<b>17.3</b>	<b>1.6</b>	<b>0.54</b>	<b>0.8</b>	<b>0.04</b>	<b>0.43</b>	<b>0.530</b>	<b>47.583</b>	<b>42.9</b>	<b>58.5</b>	<b>69.8</b>
Sawtimber	12	98.2	14.2	62.3	5.4	1.93	2.5	0.35	1.56	135.39	0.635	55.151	38.7	64.8	77.0
	13	50.0	6.4	40.1	3.8	1.15	1.3	0.16	1.00	94.65	0.801	75.722	42.7	64.9	76.1
	14	108.1	17.2	102.1	10.8	2.89	2.7	0.43	2.55	270.55	0.945	100.146	44.5	70.8	81.7
	15	158.9	22.4	176.6	20.0	4.87	4.0	0.56	4.42	500.09	1.112	125.895	48.4	72.1	82.7
	16	265.9	41.2	351.8	42.4	9.28	6.6	1.03	8.79	1059.84	1.323	159.408	51.7	75.0	85.2
	17	287.6	37.2	468.8	59.4	11.33	7.2	0.93	11.72	1486.24	1.630	206.723	58.3	79.2	89.3
	18	290.0	40.3	533.5	71.5	12.81	7.3	1.01	13.34	1787.32	1.840	246.527	59.6	79.9	89.8
	19	210.0	36.5	442.5	62.6	10.34	5.3	0.91	11.06	1564.69	2.107	298.036	61.0	83.0	92.8
	20	103.8	15.8	259.9	37.4	5.66	2.6	0.40	6.50	933.90	2.505	360.053	66.1	84.8	95.0
	21	86.2	19.4	238.5	35.8	5.19	2.2	0.49	5.96	896.19	2.765	415.690	66.2	88.4	97.8
	22	40.0	2.9	130.5	19.8	2.64	1.0	0.07	3.26	494.41	3.263	494.409	76.0	90.0	99.5
	23	70.0	15.7	232.1	37.2	5.05	1.8	0.39	5.80	931.01	3.315	532.006	66.1	87.9	96.5
	24	60.0	15.0	215.3	35.4	4.71	1.5	0.37	5.38	884.54	3.588	589.692	66.4	87.8	96.2
25	10.0	0.5	41.0	6.7	0.85	0.3	0.01	1.02	167.02	4.100	668.076	76.5	86.5	95.5	
27	10.0	8.6	36.3	6.8	0.99	0.3	0.21	0.91	169.93	3.631	679.722	45.0	80.5	88.5	
<b>Sawtimber Total</b>		<b>1,848.7</b>	<b>293.2</b>	<b>3,331.3</b>	<b>455.0</b>	<b>79.70</b>	<b>46.2</b>	<b>7.33</b>	<b>83.28</b>	<b>11375.77</b>	<b>1.802</b>	<b>246.140</b>	<b>56.5</b>	<b>78.5</b>	<b>88.6</b>
<b>Group Total</b>		<b>1,994.2</b>	<b>337.0</b>	<b>3,348.7</b>	<b>456.6</b>	<b>81.36</b>	<b>49.9</b>	<b>8.42</b>	<b>83.72</b>	<b>11414.71</b>	<b>1.700</b>	<b>228.958</b>	<b>56.3</b>	<b>76.7</b>	<b>87.0</b>

### Red Oak

	Stand Total					Per Acre					Avg. Tree		Avg. Heights		
	DBH	Trees	PW Tons	Saw Tons	MBF	BA	Trees	PW Tons	Saw Tons	BF	Tons/Tree	BF/Tree	Hs	Hp	Hm
Large ST	15	10.0	0.0	9.5	1.0	0.31	0.3	0.00	0.24	24.22	0.952	96.887	32.5	32.5	37.5
	16	20.0	0.0	19.5	2.2	0.70	0.5	0.00	0.49	54.36	0.976	108.717	28.5	28.5	29.5
	17	50.0	0.0	44.3	5.3	1.97	1.3	0.00	1.11	131.39	0.886	105.112	21.3	21.3	26.1
	18	20.0	0.0	29.7	3.7	0.88	0.5	0.00	0.74	91.53	1.486	183.058	36.5	36.5	38.0
	20	20.0	0.0	30.3	4.1	1.09	0.5	0.00	0.76	102.60	1.515	205.199	28.5	28.5	35.5
	21	20.0	0.0	37.3	5.2	1.20	0.5	0.00	0.93	130.79	1.863	261.573	32.5	32.5	36.0
	22	20.0	0.0	40.6	5.9	1.32	0.5	0.00	1.02	148.61	2.030	297.225	32.5	32.5	36.0
	25	10.0	0.0	35.7	5.6	0.85	0.3	0.00	0.89	138.83	3.567	555.322	48.5	48.5	49.5
<b>Large ST Total</b>		<b>170.0</b>	<b>0.0</b>	<b>246.9</b>	<b>32.9</b>	<b>8.32</b>	<b>4.3</b>	<b>0.00</b>	<b>6.17</b>	<b>822.33</b>	<b>1.452</b>	<b>193.489</b>	<b>29.7</b>	<b>29.7</b>	<b>33.4</b>
<b>Group Total</b>		<b>170.0</b>	<b>0.0</b>	<b>246.9</b>	<b>32.9</b>	<b>8.32</b>	<b>4.3</b>	<b>0.00</b>	<b>6.17</b>	<b>822.33</b>	<b>1.452</b>	<b>193.489</b>	<b>29.7</b>	<b>29.7</b>	<b>33.4</b>

### White Oak

	Stand Total					Per Acre					Avg. Tree		Avg. Heights		
	DBH	Trees	PW Tons	Saw Tons	MBF	BA	Trees	PW Tons	Saw Tons	BF	Tons/Tree	BF/Tree	Hs	Hp	Hm
	Large ST	16	10.0	0.0	10.8	1.2	0.35	0.3	0.00	0.27	29.58	1.080	118.301	32.5	32.5
	19	30.0	0.0	42.4	5.5	1.48	0.8	0.00	1.06	137.39	1.414	183.188	29.8	29.8	33.8
<b>Large ST Total</b>		<b>40.0</b>	<b>0.0</b>	<b>53.2</b>	<b>6.7</b>	<b>1.83</b>	<b>1.0</b>	<b>0.00</b>	<b>1.33</b>	<b>166.97</b>	<b>1.331</b>	<b>166.967</b>	<b>30.5</b>	<b>30.5</b>	<b>34.3</b>
<b>Group Total</b>		<b>40.0</b>	<b>0.0</b>	<b>53.2</b>	<b>6.7</b>	<b>1.83</b>	<b>1.0</b>	<b>0.00</b>	<b>1.33</b>	<b>166.97</b>	<b>1.331</b>	<b>166.967</b>	<b>30.5</b>	<b>30.5</b>	<b>34.3</b>

### Misc. Hardwood

	Stand Total					Per Acre					Avg. Tree		Avg. Heights		
	DBH	Trees	PW Tons	Saw Tons	MBF	BA	Trees	PW Tons	Saw Tons	BF	Tons/Tree	BF/Tree	Hs	Hp	Hm
	Pulpwood	6	76.4	11.6			0.37	1.9	0.29			0.151			32.5
	7	392.9	72.7			2.62	9.8	1.82			0.185			27.9	31.6
	8	386.7	103.6			3.37	9.7	2.59			0.268			32.5	36.5
	9	135.8	46.3			1.50	3.4	1.16			0.341			32.5	35.3
	10	165.0	69.6			2.25	4.1	1.74			0.422			32.5	37.3
	11	90.9	54.0			1.50	2.3	1.35			0.594			40.5	44.0
	12	210.1	144.2			4.12	5.3	3.60			0.686			39.0	43.0
	13	179.0	145.5			4.12	4.5	3.64			0.813			39.0	43.3
	14	112.3	102.4			3.00	2.8	2.56			0.912			37.5	41.9
	15	24.4	23.3			0.75	0.6	0.58			0.952			32.5	38.0
	16	21.5	21.1			0.75	0.5	0.53			0.980			28.5	33.5
	17	9.5	11.6			0.37	0.2	0.29			1.216			32.5	32.5
	18	8.5	9.4			0.37	0.2	0.24			1.109			24.5	30.5
<b>Pulpwood Total</b>		<b>1,813.0</b>	<b>815.1</b>			<b>25.12</b>	<b>45.3</b>	<b>20.38</b>			<b>0.450</b>			<b>33.5</b>	<b>37.5</b>
Large ST	15	20.0	0.0	15.4	1.6	0.61	0.5	0.00	0.39	41.08	0.770	82.152	24.5	24.5	28.5
	16	10.0	0.0	10.8	1.2	0.35	0.3	0.00	0.27	29.58	1.080	118.301	32.5	32.5	35.5
	17	20.0	0.0	26.7	3.1	0.79	0.5	0.00	0.67	77.94	1.333	155.878	36.5	36.5	41.5
	18	10.0	0.0	16.1	2.0	0.44	0.3	0.00	0.40	49.44	1.606	197.762	40.5	40.5	41.5
	19	10.0	0.0	15.2	2.0	0.49	0.3	0.00	0.38	49.35	1.524	197.406	32.5	32.5	35.5
	20	10.0	0.0	13.7	1.9	0.55	0.3	0.00	0.34	47.19	1.369	188.752	24.5	24.5	30.5
	23	10.0	0.0	26.3	4.0	0.72	0.3	0.00	0.66	99.00	2.630	395.998	40.5	40.5	40.5
	24	10.0	0.0	24.3	3.7	0.79	0.3	0.00	0.61	93.55	2.433	374.194	32.5	32.5	35.5
<b>Large ST Total</b>		<b>100.0</b>	<b>0.0</b>	<b>148.5</b>	<b>19.5</b>	<b>4.74</b>	<b>2.5</b>	<b>0.00</b>	<b>3.71</b>	<b>487.12</b>	<b>1.485</b>	<b>194.847</b>	<b>32.5</b>	<b>32.5</b>	<b>35.9</b>
<b>Group Total</b>		<b>1,913.0</b>	<b>815.1</b>	<b>148.5</b>	<b>19.5</b>	<b>29.86</b>	<b>47.8</b>	<b>20.38</b>	<b>3.71</b>	<b>487.12</b>	<b>0.504</b>	<b>10.185</b>	<b>32.5</b>	<b>33.5</b>	<b>37.4</b>

# TIMBER SALE BID FORM

Wolfe Farm Tract – Clark County, Arkansas

**Bid Date: Friday, May 8, 2026 @ 10:00 a.m.**

**Send Completed Offer Forms to us:**

**Mail:** P.O. Box 65, Arkadelphia, AR 71923

**Fax:** 870-367-8424

**Hand Deliver:** #4 Executive Circle, Arkadelphia, AR 71923

**E-mail:** [arkadelphia@kingwoodforestry.com](mailto:arkadelphia@kingwoodforestry.com)

I submit the following as an offer for the purchase of all merchantable timber within designated clearcut sale area, plus marked pine sawtimber within SMZ, plus pay-as-cut per-ton prices for 1<sup>st</sup> thinning area, on the Wolfe Farm Tract further described as Parts of Sections 12 and 13, Township 9 South, Range 21 West, Clark County, Arkansas (Wolfe Farm Tract – see attached maps).

My offer will remain valid through 10:00 a.m. Tuesday, May 12, 2026. Successful bidder will be notified at or before that time by telephone, fax, or e-mail. If my offer is accepted, I am ready, willing, and able to execute a Forest Products Sale Contract within ten (10) business days with payment in full due at time of contract execution.

**Send offer form to:** Kingwood Forestry Services, Inc. (**Before 10:00 a.m., Friday, May 8, 2026**)  
P.O. Box 65, Arkadelphia, AR 71923 or fax to 870-367-8424 or  
E-mail completed Bid Form to [Arkadelphia@kingwoodforestry.com](mailto:Arkadelphia@kingwoodforestry.com)

**Wolfe Farm Tract Timber Bid – Clearcut Sale Area Plus Marked Pine in SMZ: \$ \_\_\_\_\_**

Wolfe Farm Tract – 1 <sup>st</sup> Thinning Area – 22.8± Acres – Clark County, Arkansas	
Product / Please Provide Specs	Per-Ton Offer
Pine Chip n' Saw:	\$ _____ / TON
Pine Pulpwood:	\$ _____ / TON

Date: \_\_\_\_\_ Fax #: \_\_\_\_\_

Company: \_\_\_\_\_  
Printed Phone #: \_\_\_\_\_

Name: \_\_\_\_\_ Name: \_\_\_\_\_  
Printed Signed

Address: \_\_\_\_\_  
Street City, State, Zip

Email: \_\_\_\_\_

