



P.O. Box 65
 No. 4 Executive Circle
 Arkadelphia, AR 71923
 (870) 246-5757
 FAX 1-870-367-8424
 E-mail: arkadelphia@kingwoodforestry.com



Other Kingwood
 Locations:
 P.O. Box 1290
 145 Greenfield Drive
Monticello, AR 71657
 (870) 367-8567
 FAX 1-870-367-8424

P.O. Box 5887
 4414 Galleria Oaks
Texarkana, TX 75505
 (903) 831-5200
 FAX 1-870-367-8424

NOTICE OF TIMBER SALE

Red Springs Tract Stand B – Clark County, Arkansas

Bid Date: Friday, May 1, 2026 @ 10:00 a. m.

Kingwood Forestry Services has been authorized to solicit bids for the sale of all merchantable timber on 81.8 acres, plus selectively marked pine sawtimber within 4.0-acre Streamside Management Zone (SMZ), more or less, in Clark County, Arkansas.

Location: Timber to be sold is on land described as Part of Section 36, Township 9 South, Range 20 West, clearcut timber sale area containing 81.8 acres, more or less, plus selectively marked pine trees within 4.0-acre SMZ, more or less, Clark County, Arkansas (Red Springs Tract Stand B – see attached maps).

Timber to be Sold: All merchantable timber within the designated clearcut sale area is to be sold. Timber sale boundaries are marked with pink Timber Harvest Boundary (THB) flagging and blue paint. SMZ is delineated with orange SMZ flagging and blue paint; selective pine trees to be sold within SMZ are marked with two (2) spots of blue paint – once at ground level and once at eye level or above. Based on inventory of merchantable timber conducted by Kingwood Forestry in April, 2026, and 100% tally with SMZ, estimated tree counts and timber volumes are as follows:

±81.8 CLEARCUT ACRES		
Pine Sawtimber:	5,277 Trees	5,875 Tons
Pine Chip N’ Saw:	2,639 Trees	1,499 Tons
Pine Pulpwood:	8,714 Trees	3,355 Tons
Pine Topwood:	----	967 Tons
Hardwood Pulpwood:	2,296 Trees	607 Tons
±4.0 ACRES OF SELECTIVELY MARKED SAWTIMBER		
Pine Sawtimber:	41 Trees	57 Tons

Due to variations in cruising methods, utilization standards, and scaling practices, tree counts and volume estimates cannot be guaranteed. Marked tree count, however, is guaranteed to be accurate. Volume report for clearcut sale area is attached. Volume report for marked timber within SMZ is available online and / or upon request.

Based on our estimates pine sawtimber to be sold within clearcut sale area averages 14.8” DBH.

Method of Sale: Timber will be sold on the basis of lump sum sealed bids. A bid form is attached. Bids will be opened at **10:00 a.m., Friday, May 1, 2026**, at the Kingwood Forestry office at #4 Executive Circle, Arkadelphia. Buyers submitting bids are welcome to attend the bid opening. Mailed bids should be addressed to Kingwood Forestry Services, Inc., P.O. Box 65, Arkadelphia, AR 71923, with **“Red Springs Tract Stand B Timber Sale”** clearly marked in the lower left corner of the envelope. Telephone bids from buyers known to Kingwood will be accepted; however, it is preferred that bids be delivered by fax to 870-367-8424 or by e-mail to arkadelphia@kingwoodforestry.com. Faxed / e-mailed bids will be immediately acknowledged. Please await confirmation that your faxed / email bid has been received. Anyone submitting a bid for the purchase of the timber will be provided with a summary of the bid results.

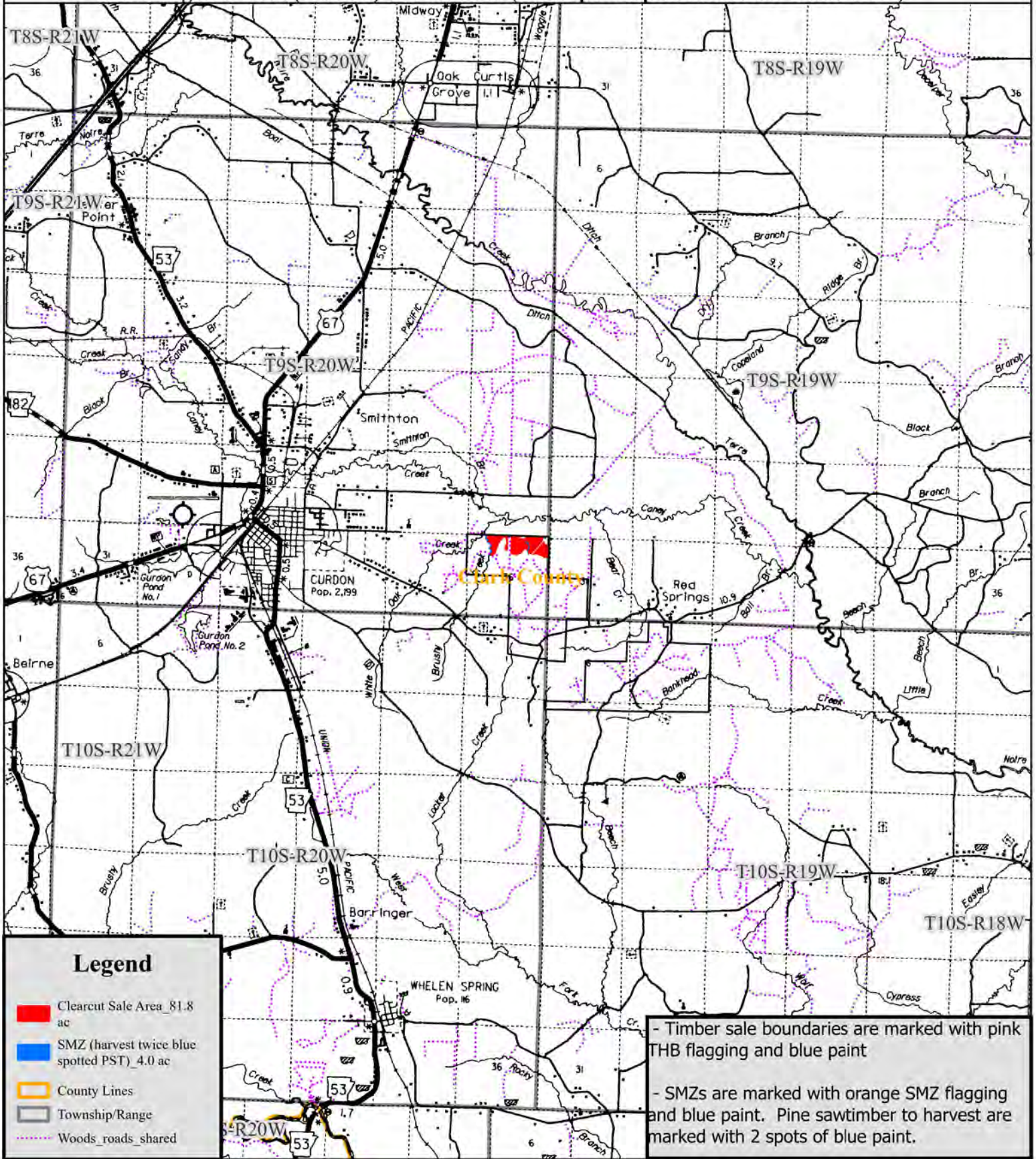
Conditions of Sale:

1. The landowner reserves the right to accept or reject any bid.
2. A performance deposit of \$2,000.00 is to be paid to Kingwood Forestry Services Escrow and will be held until all work is completed satisfactorily.
3. Conveyance will be by conventional Forest Products Sale Contract providing twenty-four (24) months from date of contract execution to harvest and remove the designated timber.
4. Buyer must notify Kingwood Forestry Services, Inc. two (2) days prior to start of harvesting operation.
5. Logging damage must be held to a minimum. Compliance with Best Management Practices for Arkansas will be required.

For more information, contact Jimmy Don Thomas or Phil Wright of Kingwood Forestry Services, Inc. at 870-246-5757 or by e-mail to Arkadelphia@kingwoodforestry.com

NOTICE OF TIMBER SALE
O'Keefe Timber Industries, LLC - "Red Springs Stand B"
Pt. Sec. 36, T9S, R20W, Clark County, Arkansas

containing 81.8 acres (clearcut) and 4.0 acres (twice spotted pine sawtimber within SMZ)

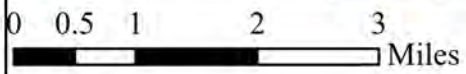


Legend

- Clearcut Sale Area_81.8 ac
- SMZ (harvest twice blue spotted PST)_4.0 ac
- County Lines
- Township/Range
- Woods_roads_shared

- Timber sale boundaries are marked with pink THB flagging and blue paint

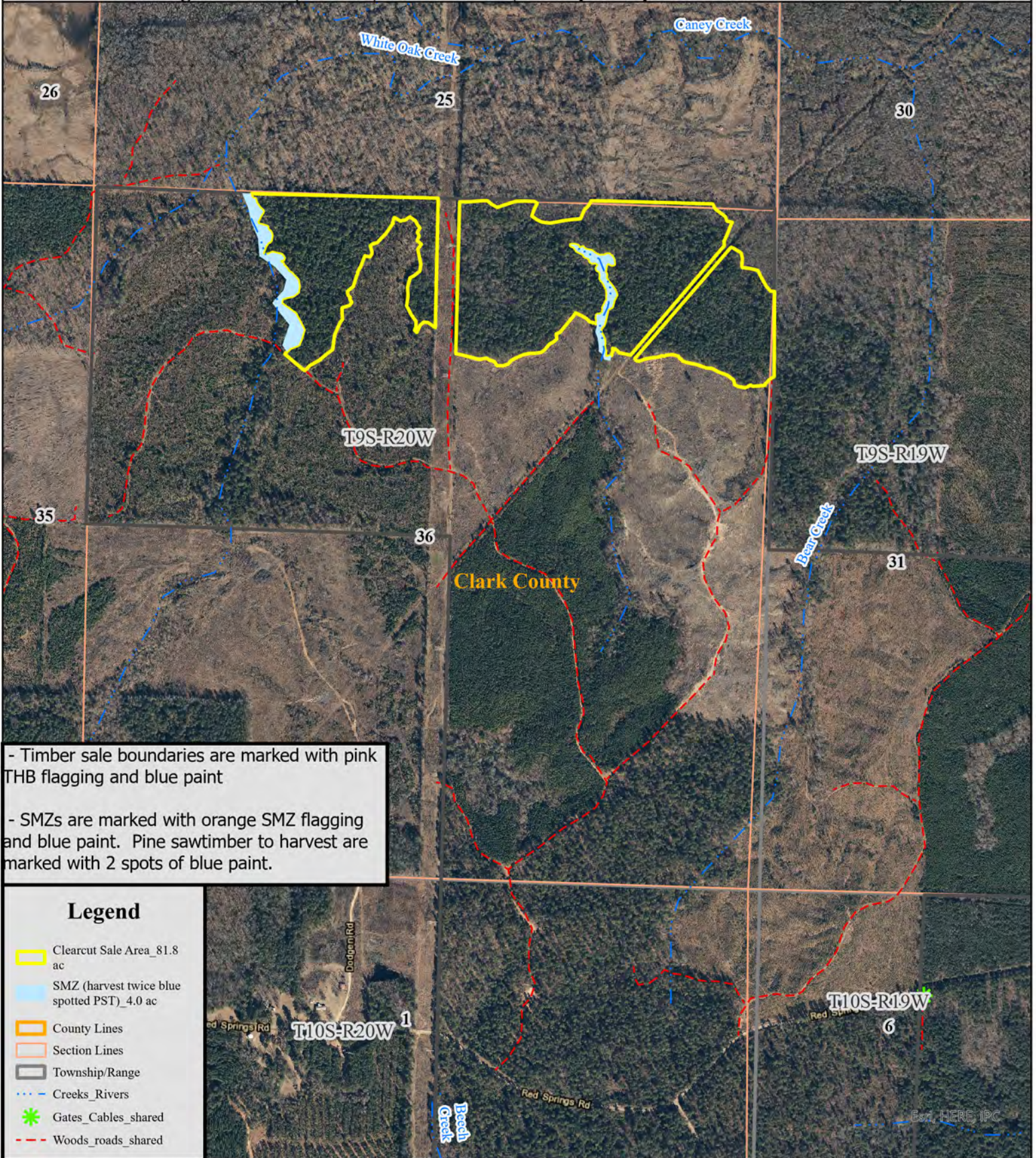
- SMZs are marked with orange SMZ flagging and blue paint. Pine sawtimber to harvest are marked with 2 spots of blue paint.



Drawn By: JDT



NOTICE OF TIMBER SALE
O'Keefe Timber Industries, LLC - "Red Springs Stand B"
Pt. Sec. 36, T9S, R20W, Clark County, Arkansas
containing 81.8 acres (clearcut) and 4.0 acres (twice spotted pine sawtimber within SMZ)

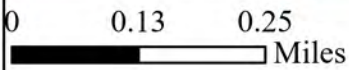


- Timber sale boundaries are marked with pink THB flagging and blue paint

- SMZs are marked with orange SMZ flagging and blue paint. Pine sawtimber to harvest are marked with 2 spots of blue paint.

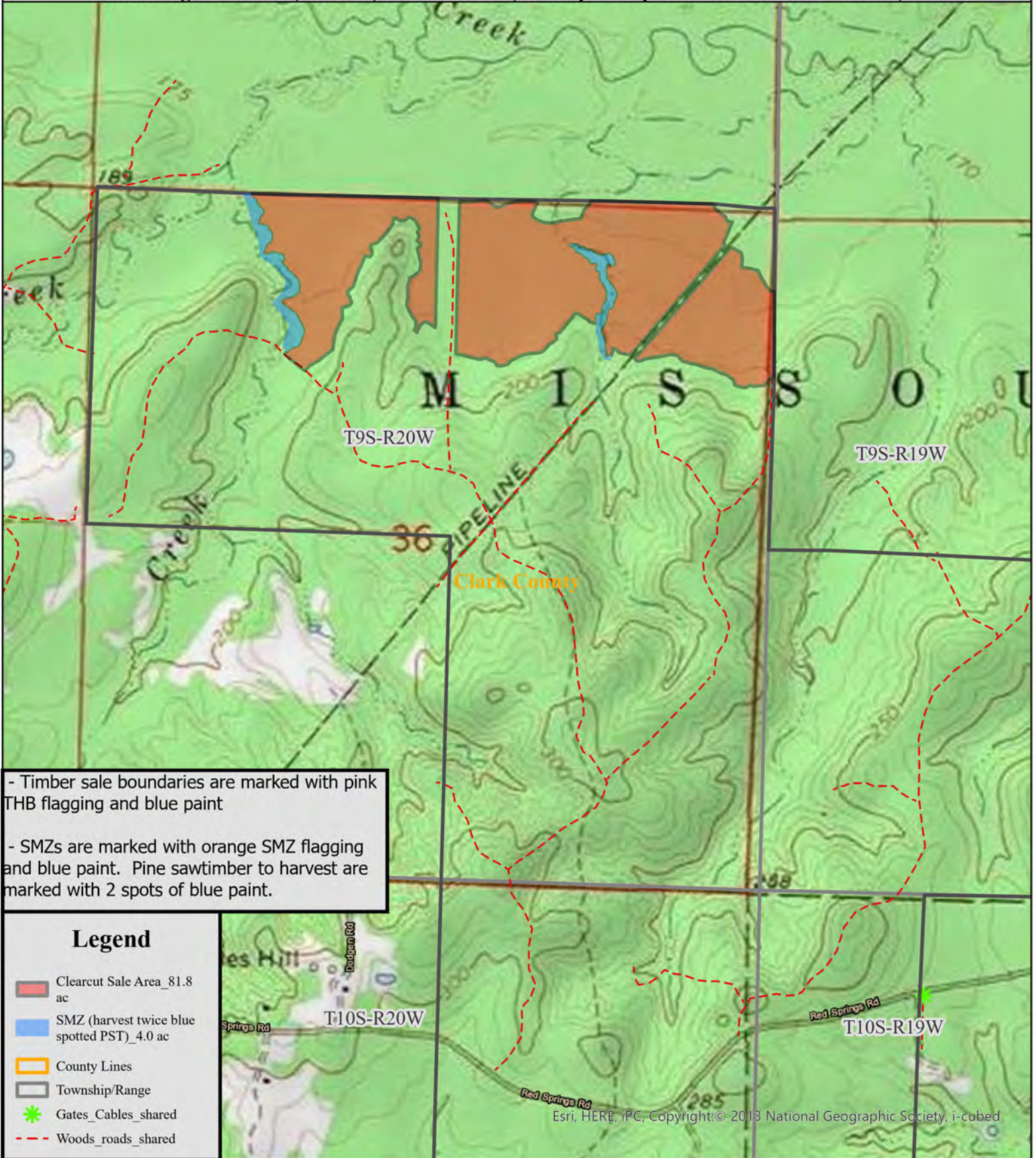
Legend

- Clearcut Sale Area_81.8 ac
- SMZ (harvest twice blue spotted PST)_4.0 ac
- County Lines
- Section Lines
- Township/Range
- Creeks_Rivers
- ✱ Gates_Cables_shared
- Woods_roads_shared



Drawn By: JDT



NOTICE OF TIMBER SALE
O'Keefe Timber Industries, LLC - "Red Springs Stand B"
Pt. Sec. 36, T9S, R20W, Clark County, Arkansas
containing 81.8 acres (clearcut) and 4.0 acres (twice spotted pine sawtimber within SMZ)



- Timber sale boundaries are marked with pink THB flagging and blue paint

- SMZs are marked with orange SMZ flagging and blue paint. Pine sawtimber to harvest are marked with 2 spots of blue paint.

Legend

-  Clearcut Sale Area_81.8 ac
-  SMZ (harvest twice blue spotted PST)_4.0 ac
-  County Lines
-  Township/Range
-  Gates_Cables_shared
-  Woods_roads_shared

Esri, HERE, iPC, Copyright:© 2013 National Geographic Society, i-cubed

0 0.13 0.25
 Miles

Drawn By: JDT



Stand Summary by Group, Product and DBH

Sampling Method:	Point
BAF / Plot Size:	15
# Plots/points:	80
Stand Acres:	82.4
Cruiser:	JDT
Template:	GENERIC

Tract Name:	Stand B - Clearcut Sale Area
Stand ID:	Native Pine
Location:	Clark County AR
Date Cruised:	04/10/2026
Sawlog Vol Units:	Doyle

Site Index Species:	Planted Loblolly
Base Age:	25
Site Index:	0.0
# SI Samples:	0
Avg Age:	0
Avg Ht:	0.0



Pine

	Stand Total					Per Acre					Avg. Tree		Avg. Heights			
	DBH	Trees	PW Tons	Saw Tons	MBF	BA	Trees	PW Tons	Saw Tons	BF	Tons/Tree	BF/Tree	Hs	Hp	Hm	
Pulpwood	6	1,809.8	318.9			4.31	22.0	3.87			0.176			42.1	55.9	
	7	1,098.4	274.7			3.56	13.3	3.33			0.250			47.3	60.9	
	8	2,124.5	687.2			9.00	25.8	8.34			0.323			49.2	61.2	
	9	1,573.7	672.7			8.44	19.1	8.16			0.427			53.9	65.9	
	10	963.1	495.3			6.37	11.7	6.01			0.514			53.8	64.4	
	11	655.5	418.6			5.25	8.0	5.08			0.639			57.1	67.3	
	12	216.4	166.6			2.06	2.6	2.02			0.770			59.2	69.0	
	13	134.1	120.9			1.50	1.6	1.47			0.902			60.2	69.3	
	14	57.8	61.7			0.75	0.7	0.75			1.067			62.5	71.5	
	15	12.6	16.0			0.19	0.2	0.19			1.272			66.4	75.5	
	16	11.1	15.8			0.19	0.1	0.19			1.428			66.1	74.5	
	18	35.0	60.6			0.75	0.4	0.74			1.733			64.1	71.0	
	19	15.7	30.9			0.37	0.2	0.37			1.967			65.9	73.0	
	21	6.4	15.6			0.19	0.1	0.19			2.421			70.7	77.5	
	Pulpwood Total	8,714.1	3,355.6			42.94	105.8	40.72			0.385			50.1	62.2	
	CNS	10	1,079.0	55.8	535.1	48.1	7.14	13.1	0.68	6.49	584.27	0.496	44.619	44.5	58.7	70.7
		11	1,560.1	68.5	964.5	83.1	12.49	18.9	0.83	11.71	1008.17	0.618	53.249	47.5	60.1	71.0
		CNS Total	2,639.1	124.3	1,499.6	131.2	19.64	32.0	1.51	18.20	1592.44	0.568	49.721	46.3	59.6	70.9
	Sawtimber	12	1,358.3	165.5	910.3	80.9	12.95	16.5	2.01	11.05	981.90	0.670	59.568	40.0	62.3	72.7
		13	1,218.3	159.2	986.8	95.8	13.63	14.8	1.93	11.98	1162.07	0.810	78.593	42.5	64.1	74.3
		14	935.3	120.0	906.7	93.8	12.13	11.4	1.46	11.00	1138.03	0.969	100.264	45.3	65.7	75.1
15		805.7	108.7	918.9	101.2	12.00	9.8	1.32	11.15	1228.28	1.140	125.611	47.8	67.6	76.5	
16		374.7	57.9	485.4	57.7	6.35	4.5	0.70	5.89	699.92	1.295	153.924	48.1	68.1	76.8	
17		98.5	11.8	148.0	18.2	1.88	1.2	0.14	1.80	220.93	1.502	184.786	51.4	67.8	75.9	
18		96.2	13.2	164.9	21.7	2.06	1.2	0.16	2.00	262.85	1.715	225.210	52.4	70.1	78.0	
19		73.1	28.4	121.7	17.7	1.75	0.9	0.34	1.48	214.26	1.665	241.598	41.8	71.2	78.7	
20		56.7	27.8	110.9	17.1	1.50	0.7	0.34	1.35	207.68	1.957	302.053	43.6	78.6	86.8	
21		19.3	12.0	37.1	6.0	0.56	0.2	0.15	0.45	73.26	1.926	313.243	36.8	73.9	81.2	
22		17.6	7.0	45.5	7.3	0.56	0.2	0.09	0.55	88.23	2.594	414.078	51.8	80.4	87.8	
23		21.0	1.3	76.4	11.9	0.74	0.3	0.02	0.93	144.26	3.636	565.794	79.3	92.8	101.4	
24		29.5	13.4	92.1	15.4	1.12	0.4	0.16	1.12	186.62	3.122	521.131	54.8	81.4	88.5	
25		22.7	14.2	83.6	14.4	0.94	0.3	0.17	1.01	174.50	3.689	634.509	62.9	93.4	101.5	
26		8.4	4.3	36.5	6.5	0.37	0.1	0.05	0.44	78.29	4.353	769.764	69.8	98.2	106.5	
27		35.0	27.6	148.5	27.5	1.69	0.4	0.34	1.80	333.14	4.246	784.947	56.6	94.4	101.9	
28		35.1	6.5	181.4	32.0	1.82	0.4	0.08	2.20	388.91	5.175	914.229	76.5	92.6	99.6	
29		23.8	21.4	126.2	24.6	1.32	0.3	0.26	1.53	298.43	5.309	1034.399	60.9	103.1	110.8	
30		16.6	19.0	84.0	16.7	0.99	0.2	0.23	1.02	202.22	5.061	1004.116	52.1	95.4	102.3	
31		5.9	2.0	35.3	6.6	0.37	0.1	0.02	0.43	80.68	5.990	1127.609	69.4	89.3	95.5	
32		11.1	9.5	73.5	14.5	0.75	0.1	0.12	0.89	176.34	6.639	1313.146	69.2	102.9	109.8	
33	10.3	7.2	66.3	13.3	0.74	0.1	0.09	0.80	161.93	6.433	1295.458	58.5	90.0	95.5		
34	2.5	3.7	18.0	3.8	0.19	0.0	0.04	0.22	46.13	7.330	1551.122	60.5	109.9	116.5		
36	2.2	1.3	17.9	3.7	0.19	0.0	0.02	0.22	44.39	8.172	1673.330	65.5	93.9	99.5		
Sawtimber Total	5,277.4	843.0	5,875.6	708.1	76.61	64.0	10.23	71.31	8593.24	1.113	134.173	44.8	66.5	76.0		
Group Total	16,630.6	4,322.8	7,375.3	839.3	139.18	201.8	52.46	89.51	10185.68	0.645	50.467	45.1	56.8	68.0		

Misc. Hardwood

	Stand Total					Per Acre					Avg. Tree		Avg. Heights		
	DBH	Trees	PW Tons	Saw Tons	MBF	BA	Trees	PW Tons	Saw Tons	BF	Tons/Tree	BF/Tree	Hs	Hp	Hm
Pulpwood	6	786.9	101.9			1.87	9.5	1.24			0.129			26.1	29.0
	7	404.7	70.4			1.31	4.9	0.85			0.174			25.6	28.9
	8	309.8	60.6			1.31	3.8	0.74			0.195			25.5	28.4
	9	209.8	64.7			1.12	2.5	0.78			0.308			28.5	31.8
	10	85.0	31.3			0.56	1.0	0.38			0.368			27.2	29.5
	11	257.5	119.9			2.06	3.1	1.46			0.466			28.9	32.8
	12	137.7	81.6			1.31	1.7	0.99			0.592			31.4	35.9
	13	50.3	31.4			0.56	0.6	0.38			0.624			27.2	31.2
	14	43.4	33.6			0.56	0.5	0.41			0.776			29.8	34.2
	16	11.1	12.0			0.19	0.1	0.15			1.086			32.5	39.5
	Pulpwood Total	2,296.1	607.4			10.87	27.9	7.37			0.265			26.9	30.2
Group Total	2,296.1	607.4	0.0	0.0	10.87	27.9	7.37	0.00	0.00	0.265	0.000	0.0	26.9	30.2	

Twice blue spotted PST

TRACT NAME:	Red Springs Stand B (SMZ)		
LEGAL:	Pt. Sec. 36, T9S, R20W	# ACRES:	4
COUNTY:	Clark	STATE:	AR
CRUISED BY:	JDT	100 % CRUISE	
FORM CLASS:	LOCAL VOLUME TABLE: TONS		
		DATE:	3/30/2026

Stand Data	
Avg DBH	16.4
Tree Avg	1.4
Log Avg	0.6
Acre Avg	14.2

PINE SAWTIMBER - SMZ - TONS

INCHES D.B.H.	1 LOG TREES		1.5 LOG TREES		2.0 LOG TREES		2.5 LOG TREES		3.0 LOG TREES		3.5 LOG TREES		4.0 LOG TREES		4.5 LOG TREES		5 LOG TREES		TOTALS			
	#TREES	TONS	#TREES	TONS	#TREES	TONS	#TREES	TONS	#TREES	TONS	#TREES	TONS	#TREES	TONS	#TREES	VOLUME	#TREES	TONS	#TREES	TONS		
10	-	-	-	-	-	-	-	-	-	-	-	-	-	-	-	-	-	-	-	-	-	
12	-	-	-	-	3	2	4	3	3	2	-	-	-	-	-	-	-	-	10	7		
14	-	-	-	-	2	2	7	6	-	-	-	-	-	-	-	-	-	-	9	8		
16	-	-	-	-	4	4	3	3	3	4	-	-	-	-	-	-	-	-	10	12		
18	-	-	1	1	1	1	2	3	1	2	-	-	-	-	-	-	-	-	5	7		
20	-	-	1	1	-	-	-	-	1	2	-	-	-	-	-	-	-	-	2	3		
22	-	-	-	-	-	-	-	-	-	-	-	-	-	-	-	-	-	-	-	-		
24	-	-	-	-	-	-	1	3	-	-	1	4	-	-	-	-	-	-	2	6		
26	-	-	-	-	-	-	-	-	-	-	1	4	-	-	-	-	-	-	1	4		
28	-	-	-	-	-	-	-	-	-	-	-	-	-	-	-	-	-	-	-	-		
30	-	-	-	-	1	4	-	-	-	-	-	-	-	-	-	-	-	-	1	4		
32	-	-	-	-	-	-	-	-	-	-	-	-	-	-	-	-	-	-	-	-		
34	-	-	-	-	-	-	1	6	-	-	-	-	-	-	-	-	-	-	1	6		
TOTALS	-	-	2	2	11	12	18	24	8	10	2	8	-	-	-	-	-	-	41	57		



TIMBER SALE BID FORM

Red Springs Tract Stand B – Clark County, Arkansas

Bid Date: Friday, May 1, 2026 @ 10:00 a.m.

Send Completed Offer Forms to us:

Mail: P.O. Box 65, Arkadelphia, AR 71923

Fax: 870-367-8424

Hand Deliver: #4 Executive Circle, Arkadelphia, AR 71923

E-mail: arkadelphia@kingwoodforestry.com

I submit the following as an offer for the purchase of all merchantable timber within designated clearcut sale area, plus selectively marked pine and hardwood sawtimber within SMZ, on the Red Springs Tract Stand B further described as Part of Section 36, Township 9 South, Range 20 West, clearcut timber sale area containing 81.8 acres, more or less, plus selectively marked pine trees within 4-acre SMZ, more or less, Clark County, Arkansas (Red Springs Tract Stand B – see attached maps).

My offer will remain valid through 10:00 a.m. Tuesday, May 5, 2026. Successful bidder will be notified at or before that time by telephone, fax, or e-mail. If my offer is accepted, I am ready, willing, and able to execute a Forest Products Sale Contract within ten (10) business days with payment in full due at time of contract execution.

Send offer form to: Kingwood Forestry Services, Inc. (**Before 10:00 a.m., Friday, May 1, 2026**)
P.O. Box 65, Arkadelphia, AR 71923 or fax to 870-367-8424 or
E-mail completed Bid Form to Arkadelphia@kingwoodforestry.com

Red Springs Tract Stand B Timber Bid: \$ _____
(All merchantable timber in designated sale area plus selectively marked pine sawtimber in SMZ.)

Date: _____ Fax #: _____

Company: _____ Phone #: _____
Printed

Name: _____ Name: _____
Printed Signed

Address: _____
Street City, State, Zip

Email: _____

