



P.O. Box 65  
 No. 4 Executive Circle  
 Arkadelphia, AR 71923  
 (870) 246-5757  
 FAX 1-870-246-3341  
 E-mail: [arkadelphia@kingwoodforestry.com](mailto:arkadelphia@kingwoodforestry.com)



Other Kingwood  
 Locations:  
 P.O. Box 1290  
 145 Greenfield Drive  
 Monticello, AR 71657  
 (870) 367-8567  
 FAX 1-870-367-8424  
  
 P.O. Box 5887  
 4414 Galleria Oaks  
 Texarkana, TX 75505  
 (903) 831-5200  
 FAX 1-903-831-9988

## NOTICE OF TIMBER SALE

**Highway 53 North Tract – Nevada County, Arkansas**

**Bid Date: Friday, September 13, 2024 @ 10:00 a. m.**

Kingwood Forestry Services has been authorized to solicit bids for the sale of all merchantable timber on 55.8 acres, plus selectively marked pine sawtimber within 10-acre Streamside Management Zone (SMZ), more or less, in Nevada County, Arkansas. This timber sale contains mature pine and hardwood on partially rolling terrain.

**Location:** Timber to be sold is on land described as Part of N ¼, Section 22, Township 12 South, Range 22 West, clearcut timber sale area containing 55.8 acres, more or less, plus selectively marked pine trees within 10-acre SMZ, more or less, Nevada County, Arkansas (Highway 53 North Tract – see attached maps).

**Timber to be Sold:** All merchantable timber within the designated clearcut sale area is to be sold. Timber sale boundaries have been marked with pink Timber Harvest Boundary (THB) flagging and blue paint. Kingwood Forestry conducted an inventory of merchantable timber (56 plots with four cruise lines running east and west) in August, 2024. Streamside Management Zone (SMZ) is delineated with orange SMZ flagging and blue paint; selected pine sawtimber to be sold within SMZ has been marked with two (2) spots of blue paint; once at ground level and once at eye level or above. Based on a cruise within clearcut area (±55.8 acres) and 100% tally within SMZ (±10-acre), estimated tree counts and timber volumes are as follows:

| ±55.8 Clearcut Acres                                      |             |                    |            |
|---|-------------|--------------------|------------|
| Pine Sawtimber  | 2,122 Trees | 795,400 Board Feet | 5,282 Tons |
| Pine Chip N' Saw  | 59 Trees    | 2,700 Board Feet   | 31 Tons    |
| Pine Pulpwood   | 158 Trees   | ----               | 64 Tons    |
| Pine Topwood  | ----        | ----               | 467 Tons   |
| Oak Sawtimber   | 289 Trees   | 57,900 Board Feet  | 413 Tons   |
| Gum & Misc. Sawtimber                                     | 159 Trees   | 22,300 Board Feet  | 184 Tons   |
| Hardwood Pulpwood   | 2,558 Trees | ---                | 899 Tons   |
| ±10-Acre Selectively Marked Sawtimber in SMZ (100% Tally) |             |                    |            |
| Pine Sawtimber  | 60 Trees    | 26,240 Board Feet  | 159 Tons   |

Due to variations in cruising methods, utilization standards, and scaling practices, tree counts and volume estimates cannot be guaranteed. Marked tree count, however, is guaranteed to be accurate. Volume reports in Tons and Board Feet are attached.

**Based on our estimates pine sawtimber to be sold within clearcut sale area averages 20.1" DBH and 374 BF/tree.**

**Method of Sale:** Timber will be sold on the basis of lump sum sealed bids. A bid form is attached. Bids will be opened at **10:00 a.m., Friday, September 13, 2024**, at the Kingwood Forestry office at #4 Executive Circle, Arkadelphia. Buyers submitting bids are welcome to attend the bid opening. Mailed bids should be addressed to Kingwood Forestry Services, Inc., P.O. Box 65, Arkadelphia, AR 71923, with "**Highway 53 North Tract Timber Sale**" clearly marked in the lower left corner of the envelope. Telephone bids from buyers known to Kingwood will be accepted; however, it is preferred that bids be delivered by fax to 870-246-3341 or by e-mail to [arkadelphia@kingwoodforestry.com](mailto:arkadelphia@kingwoodforestry.com). Faxed / e-mailed bids will be immediately acknowledged. Please await confirmation that your faxed / email bid has been received. Anyone submitting a bid for the purchase of the timber will be provided with a summary of the bid results.

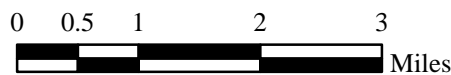
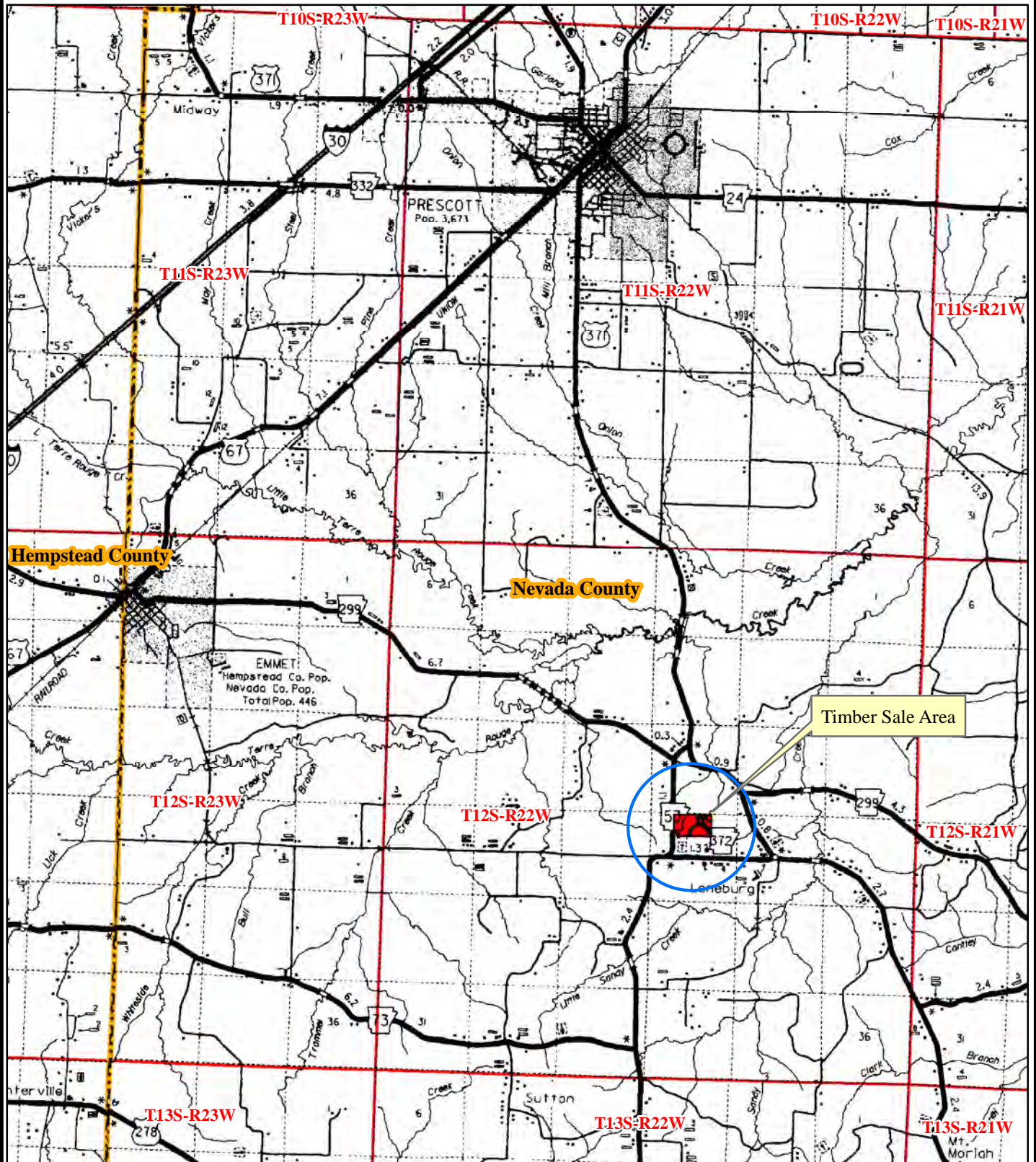
**Conditions of Sale:**

1. The landowner reserves the right to accept or reject any bid.
2. A performance deposit of \$1,000.00 is to be paid to Kingwood Forestry Services Escrow and will be held until all work is completed satisfactorily.
3. Conveyance will be by conventional Forest Products Sale Contract providing twenty-four (24) months from date of contract execution to harvest and remove the designated timber.
4. Buyer must notify Kingwood Forestry Services, Inc. two (2) days prior to start of harvesting operation.
5. Logging damage must be held to a minimum. Compliance with Best Management Practices for Arkansas will be required.

For more information, contact Jimmy Don Thomas or Phil Wright of Kingwood Forestry Services, Inc. at 870-246-5757 or by e-mail to [Arkadelphia@kingwoodforestry.com](mailto:Arkadelphia@kingwoodforestry.com)

**[www.kingwoodforestry.com](http://www.kingwoodforestry.com)**

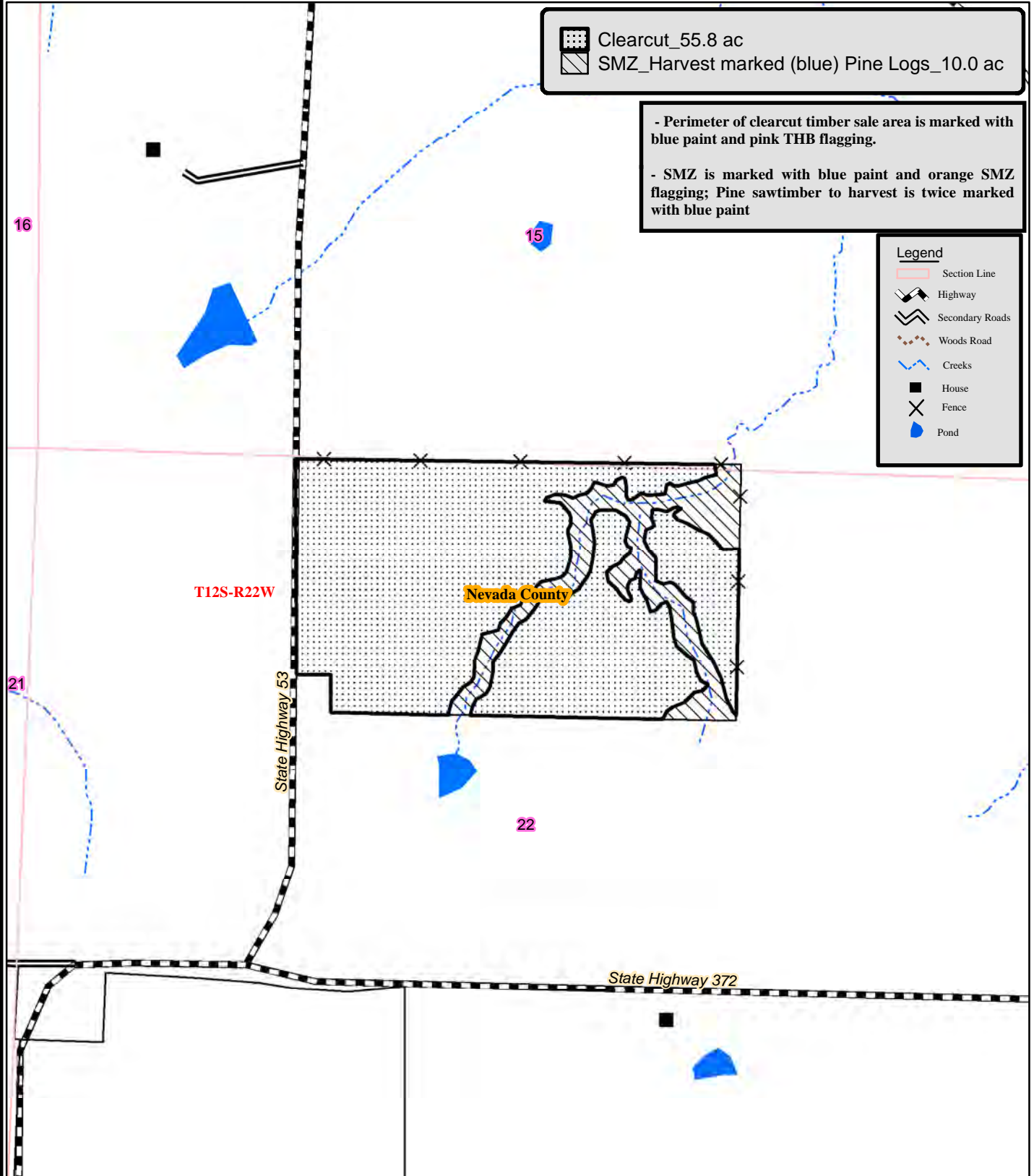
**NOTICE OF TIMBER SALE**  
**Mike McGough "Highway 53 North Tract"**  
**Pt. N¼, Sec. 22, T12S, R22W, Nevada County, Arkansas**  
**Containing 55.8 acres (clearcut) and 10.0 acres (marked (blue) pine sawtimber**





Date: 8/7/2024  
Drawn By: JDT








**NOTICE OF TIMBER SALE**  
**Mike McGough "Highway 53 North Tract"**  
**Pt. N¼, Sec. 22, T12S, R22W, Nevada County, Arkansas**  
**Containing 55.8 acres (clearcut) and 10.0 acres (marked (blue) pine sawtimber)**



 Clearcut\_55.8 ac  
 SMZ\_Harvest marked (blue) Pine Logs\_10.0 ac

- Perimeter of clearcut timber sale area is marked with blue paint and pink THB flagging.  
 - SMZ is marked with blue paint and orange SMZ flagging; Pine sawtimber to harvest is twice marked with blue paint

**Legend**

-  Section Line
-  Highway
-  Secondary Roads
-  Woods Road
-  Creeks
-  House
-  Fence
-  Pond

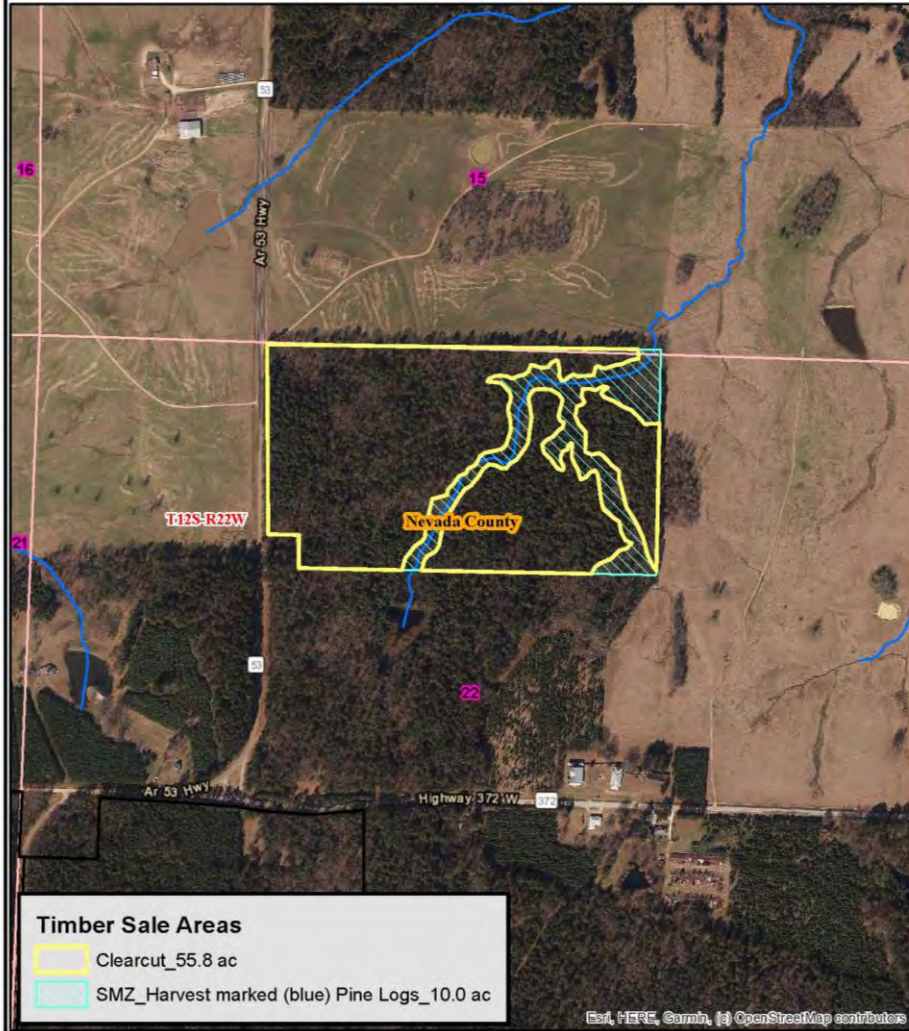
0 0.125 0.25  
 Miles



Created: Date: 8/7/2024  
 By: JDT

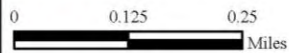


**NOTICE OF TIMBER SALE**  
**Mike McGough "Highway 53 North Tract"**  
 Pt. N¼, Sec. 22, T12S, R22W, Nevada County, Arkansas  
 Containing 55.8 acres (clearcut) and 10.0 acres (marked (blue) pine sawtimber)



**Timber Sale Areas**  
 Clearcut\_55.8 ac  
 SMZ\_Harvest marked (blue) Pine Logs\_10.0 ac

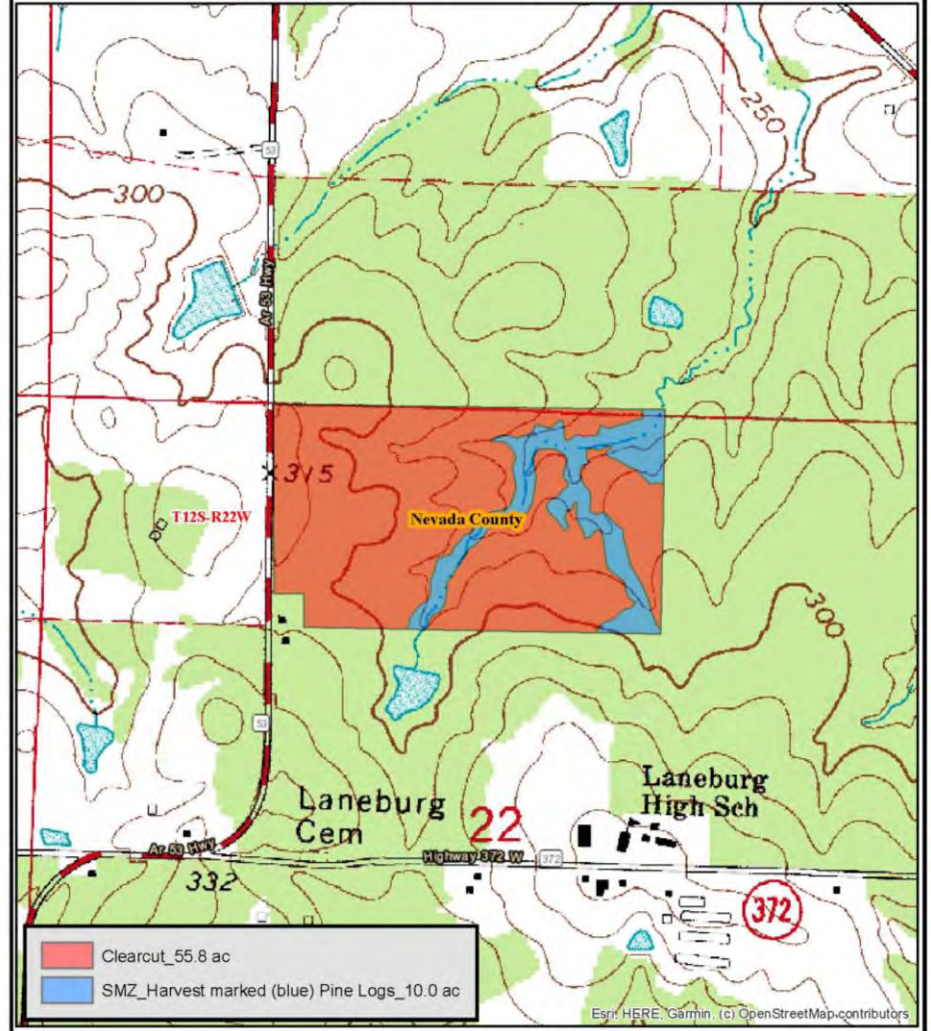
Esri, HERE, Garmin, (c) OpenStreetMap contributors



Date: 8/7/2024  
 ESRI Aerial Photography  
 Drawn By: JDT

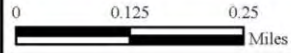


**NOTICE OF TIMBER SALE**  
**Mike McGough "Highway 53 North Tract"**  
 Pt. N¼, Sec. 22, T12S, R22W, Nevada County, Arkansas  
 Containing 55.8 acres (clearcut) and 10.0 acres (marked (blue) pine sawtimber)



Clearcut\_55.8 ac  
 SMZ\_Harvest marked (blue) Pine Logs\_10.0 ac

Esri, HERE, Garmin, (c) OpenStreetMap contributors



Date: 8/7/2024  
 Drawn By: JDT



### Stand Summary by Group, Product and DBH

|                  |         |
|------------------|---------|
| Sampling Method: | Plot    |
| BAF / Plot Size: | 0.1     |
| # Plots/points:  | 56      |
| Stand Acres:     | 55.8    |
| Cruiser:         | JDT     |
| Template:        | GENERIC |

|                   |                               |
|-------------------|-------------------------------|
| Tract Name:       | Clearcut Sale Area - Hwy 53 N |
| Stand ID:         | Mature Native P/H             |
| Location:         | Nevada County AR              |
| Date Cruised:     | 8/7/2024                      |
| Sawlog Vol Units: | Doyle                         |

|                     |                  |
|---------------------|------------------|
| Site Index Species: | Planted Loblolly |
| Base Age:           | 25               |
| Site Index:         | 0.0              |
| # SI Samples:       | 0                |
| Avg Age:            | 0                |
| Avg Ht:             | 0.0              |



### Pine

|                        | Stand Total             |                |              |                |              | Per Acre     |             |             |              |                 | Avg. Tree    |                | Avg. Heights  |             |             |
|------------------------|-------------------------|----------------|--------------|----------------|--------------|--------------|-------------|-------------|--------------|-----------------|--------------|----------------|---------------|-------------|-------------|
|                        | DBH                     | Trees          | PW Tons      | Saw Tons       | MBF          | BA           | Trees       | PW Tons     | Saw Tons     | BF              | Tons/Tree    | BF/Tree        | Hs            | Hp          | Hm          |
| Pulpwood               | 8                       | 85.6           | 24.2         |                |              | 0.54         | 1.5         | 0.43        |              |                 | 0.282        |                |               | 41.5        | 50.5        |
|                        | 9                       | 33.8           | 13.6         |                |              | 0.27         | 0.6         | 0.24        |              |                 | 0.401        |                |               | 49.7        | 60.5        |
|                        | 11                      | 22.6           | 12.5         |                |              | 0.27         | 0.4         | 0.22        |              |                 | 0.554        |                |               | 47.3        | 55.5        |
|                        | 13                      | 16.2           | 14.0         |                |              | 0.27         | 0.3         | 0.25        |              |                 | 0.865        |                |               | 57.1        | 65.5        |
|                        | <b>Pulpwood Total</b>   |                | <b>158.3</b> | <b>64.3</b>    |              |              | <b>1.34</b> | <b>2.8</b>  | <b>1.15</b>  |                 |              | <b>0.406</b>   |               |             | <b>45.7</b> |
| Chip-N-Saw             | 10                      | 10.0           | 1.4          | 3.4            | 0.3          | 0.10         | 0.2         | 0.03        | 0.06         | 4.65            | 0.339        | 26.039         | 25.5          | 50.9        | 60.5        |
|                        | 11                      | 49.8           | 3.9          | 28.0           | 2.4          | 0.59         | 0.9         | 0.07        | 0.50         | 43.34           | 0.563        | 48.539         | 41.9          | 58.2        | 68.5        |
|                        | <b>Chip-N-Saw Total</b> |                | <b>59.8</b>  | <b>5.3</b>     | <b>31.4</b>  | <b>2.7</b>   | <b>0.69</b> | <b>1.1</b>  | <b>0.10</b>  | <b>0.56</b>     | <b>47.99</b> | <b>0.526</b>   | <b>44.789</b> | <b>39.2</b> | <b>57.0</b> |
| Sawtimber              | 12                      | 49.8           | 5.9          | 31.3           | 2.7          | 0.70         | 0.9         | 0.11        | 0.56         | 48.80           | 0.628        | 54.659         | 38.9          | 56.9        | 67.5        |
|                        | 13                      | 49.8           | 6.4          | 44.3           | 4.2          | 0.82         | 0.9         | 0.12        | 0.79         | 75.26           | 0.888        | 84.296         | 47.5          | 70.1        | 82.3        |
|                        | 14                      | 59.8           | 7.8          | 60.4           | 6.3          | 1.15         | 1.1         | 0.14        | 1.08         | 112.31          | 1.010        | 104.818        | 48.0          | 68.2        | 78.8        |
|                        | 15                      | 129.5          | 18.1         | 163.6          | 18.4         | 2.85         | 2.3         | 0.32        | 2.93         | 329.56          | 1.263        | 141.963        | 53.7          | 75.1        | 86.3        |
|                        | 16                      | 109.6          | 14.1         | 167.3          | 19.9         | 2.74         | 2.0         | 0.25        | 3.00         | 357.00          | 1.526        | 181.747        | 59.4          | 79.2        | 90.4        |
|                        | 17                      | 169.4          | 28.6         | 293.2          | 37.0         | 4.78         | 3.0         | 0.51        | 5.25         | 662.49          | 1.731        | 218.231        | 60.3          | 81.8        | 93.0        |
|                        | 18                      | 289.0          | 50.0         | 561.1          | 74.5         | 9.15         | 5.2         | 0.90        | 10.06        | 1334.58         | 1.942        | 257.713        | 60.9          | 82.2        | 92.4        |
|                        | 19                      | 189.3          | 38.4         | 413.8          | 57.9         | 6.68         | 3.4         | 0.69        | 7.42         | 1038.06         | 2.186        | 305.955        | 61.8          | 84.1        | 94.1        |
|                        | 20                      | 249.1          | 49.1         | 625.9          | 91.1         | 9.74         | 4.5         | 0.88        | 11.22        | 1632.96         | 2.512        | 365.783        | 65.8          | 87.0        | 97.3        |
|                        | 21                      | 159.4          | 37.9         | 444.5          | 68.0         | 6.87         | 2.9         | 0.68        | 7.97         | 1218.14         | 2.788        | 426.348        | 65.1          | 89.8        | 99.3        |
|                        | 22                      | 199.3          | 55.9         | 594.8          | 93.5         | 9.43         | 3.6         | 1.00        | 10.66        | 1675.59         | 2.985        | 469.164        | 63.9          | 88.3        | 97.4        |
|                        | 23                      | 129.5          | 28.1         | 452.1          | 72.7         | 6.70         | 2.3         | 0.50        | 8.10         | 1302.66         | 3.490        | 561.145        | 70.9          | 92.8        | 102.2       |
|                        | 24                      | 89.7           | 17.1         | 336.0          | 54.9         | 5.05         | 1.6         | 0.31        | 6.02         | 983.45          | 3.747        | 611.927        | 71.6          | 90.5        | 99.2        |
|                        | 25                      | 69.8           | 22.1         | 271.9          | 46.2         | 4.26         | 1.3         | 0.40        | 4.87         | 828.28          | 3.898        | 662.623        | 66.3          | 89.1        | 97.9        |
|                        | 26                      | 59.8           | 17.9         | 262.9          | 46.0         | 3.95         | 1.1         | 0.32        | 4.71         | 823.91          | 4.397        | 768.981        | 69.6          | 92.5        | 101.7       |
|                        | 27                      | 49.8           | 13.2         | 232.0          | 40.6         | 3.55         | 0.9         | 0.24        | 4.16         | 727.75          | 4.656        | 815.077        | 70.5          | 89.7        | 98.1        |
|                        | 28                      | 49.8           | 31.5         | 234.4          | 43.4         | 3.82         | 0.9         | 0.56        | 4.20         | 778.27          | 4.705        | 871.664        | 60.5          | 91.7        | 99.9        |
|                        | 29                      | 10.0           | 13.0         | 34.6           | 6.7          | 0.82         | 0.2         | 0.23        | 0.62         | 120.58          | 3.470        | 675.231        | 35.0          | 74.5        | 80.5        |
| 31                     | 10.0                    | 6.5            | 58.4         | 11.5           | 0.94         | 0.2          | 0.12        | 1.05        | 205.42       | 5.858           | 1150.363     | 60.5           | 92.5          | 99.5        |             |
| <b>Sawtimber Total</b> |                         | <b>2,122.4</b> | <b>461.7</b> | <b>5,282.3</b> | <b>795.4</b> | <b>84.00</b> | <b>38.0</b> | <b>8.27</b> | <b>94.66</b> | <b>14255.06</b> | <b>2.489</b> | <b>374.781</b> | <b>62.0</b>   | <b>84.1</b> | <b>94.1</b> |
| <b>Group Total</b>     |                         | <b>2,340.5</b> | <b>531.3</b> | <b>5,313.7</b> | <b>798.1</b> | <b>86.02</b> | <b>41.9</b> | <b>9.52</b> | <b>95.23</b> | <b>14303.05</b> | <b>2.298</b> | <b>340.998</b> | <b>61.3</b>   | <b>80.8</b> | <b>90.8</b> |

| Oak            |             |       |         |          |      |          |       |         |          |         |           |         |              |      |      |
|----------------|-------------|-------|---------|----------|------|----------|-------|---------|----------|---------|-----------|---------|--------------|------|------|
|                | Stand Total |       |         |          |      | Per Acre |       |         |          |         | Avg. Tree |         | Avg. Heights |      |      |
|                | DBH         | Trees | PW Tons | Saw Tons | MBF  | BA       | Trees | PW Tons | Saw Tons | BF      | Tons/Tree | BF/Tree | Hs           | Hp   | Hm   |
|                | Large ST    | 15    | 29.9    | 0.0      | 17.2 | 1.8      | 0.66  | 0.5     | 0.00     | 0.31    | 32.51     | 0.576   | 60.686       | 16.5 | 16.5 |
|                | 16          | 39.9  | 0.0     | 30.5     | 3.5  | 1.00     | 0.7   | 0.00    | 0.55     | 61.85   | 0.765     | 86.583  | 20.5         | 20.5 | 23.0 |
|                | 17          | 29.9  | 0.0     | 31.7     | 3.7  | 0.84     | 0.5   | 0.00    | 0.57     | 66.52   | 1.060     | 124.165 | 27.2         | 27.2 | 30.5 |
|                | 18          | 29.9  | 0.0     | 32.9     | 4.1  | 0.95     | 0.5   | 0.00    | 0.59     | 73.59   | 1.101     | 137.370 | 24.5         | 24.5 | 27.2 |
|                | 19          | 39.9  | 0.0     | 54.6     | 7.1  | 1.41     | 0.7   | 0.00    | 0.98     | 127.62  | 1.371     | 178.672 | 28.5         | 28.5 | 31.8 |
|                | 20          | 10.0  | 0.0     | 16.8     | 2.3  | 0.39     | 0.2   | 0.00    | 0.30     | 40.76   | 1.689     | 228.269 | 32.5         | 32.5 | 35.5 |
|                | 21          | 29.9  | 0.0     | 41.3     | 5.8  | 1.29     | 0.5   | 0.00    | 0.74     | 104.67  | 1.381     | 195.377 | 21.8         | 21.8 | 25.5 |
|                | 22          | 19.9  | 0.0     | 24.7     | 3.5  | 0.94     | 0.4   | 0.00    | 0.44     | 63.10   | 1.239     | 176.683 | 16.5         | 16.5 | 20.5 |
|                | 23          | 29.9  | 0.0     | 66.6     | 10.0 | 1.55     | 0.5   | 0.00    | 1.19     | 179.78  | 2.229     | 335.582 | 32.5         | 32.5 | 35.5 |
|                | 25          | 10.0  | 0.0     | 31.2     | 5.0  | 0.61     | 0.2   | 0.00    | 0.56     | 89.11   | 3.131     | 499.012 | 40.5         | 40.5 | 45.5 |
|                | 27          | 10.0  | 0.0     | 30.7     | 5.1  | 0.71     | 0.2   | 0.00    | 0.55     | 90.58   | 3.080     | 507.234 | 32.5         | 32.5 | 35.5 |
|                | 29          | 10.0  | 0.0     | 35.4     | 6.0  | 0.82     | 0.2   | 0.00    | 0.63     | 108.42  | 3.554     | 607.164 | 32.5         | 32.5 | 35.5 |
| Large ST Total |             | 289.0 | 0.0     | 413.7    | 57.9 | 11.16    | 5.2   | 0.00    | 7.41     | 1038.50 | 1.432     | 200.538 | 25.3         | 25.3 | 28.6 |
| Group Total    |             | 289.0 | 0.0     | 413.7    | 57.9 | 11.16    | 5.2   | 0.00    | 7.41     | 1038.50 | 1.432     | 200.538 | 25.3         | 25.3 | 28.6 |

| Misc. Hardwood |             |         |         |          |      |          |       |         |          |        |           |         |              |      |      |
|----------------|-------------|---------|---------|----------|------|----------|-------|---------|----------|--------|-----------|---------|--------------|------|------|
|                | Stand Total |         |         |          |      | Per Acre |       |         |          |        | Avg. Tree |         | Avg. Heights |      |      |
|                | DBH         | Trees   | PW Tons | Saw Tons | MBF  | BA       | Trees | PW Tons | Saw Tons | BF     | Tons/Tree | BF/Tree | Hs           | Hp   | Hm   |
|                | Pulpwood    | 6       | 456.7   | 56.5     |      |          | 1.61  | 8.2     | 1.01     |        |           | 0.124   |              | 24.5 | 25.5 |
|                | 7           | 391.5   | 63.6    |          |      | 1.87     | 7.0   | 1.14    |          |        | 0.162     |         | 23.4         | 26.2 |      |
|                | 8           | 342.5   | 77.4    |          |      | 2.14     | 6.1   | 1.39    |          |        | 0.226     |         | 25.5         | 28.0 |      |
|                | 9           | 338.3   | 97.6    |          |      | 2.68     | 6.1   | 1.75    |          |        | 0.289     |         | 26.1         | 28.5 |      |
|                | 10          | 274.0   | 103.9   |          |      | 2.68     | 4.9   | 1.86    |          |        | 0.379     |         | 28.5         | 30.0 |      |
|                | 11          | 158.5   | 65.7    |          |      | 1.87     | 2.8   | 1.18    |          |        | 0.414     |         | 24.5         | 26.9 |      |
|                | 12          | 228.4   | 145.4   |          |      | 3.21     | 4.1   | 2.61    |          |        | 0.637     |         | 35.2         | 37.6 |      |
|                | 13          | 194.6   | 140.8   |          |      | 3.21     | 3.5   | 2.52    |          |        | 0.724     |         | 33.8         | 36.3 |      |
|                | 14          | 97.9    | 76.3    |          |      | 1.87     | 1.8   | 1.37    |          |        | 0.780     |         | 30.2         | 33.4 |      |
|                | 15          | 48.7    | 39.7    |          |      | 1.07     | 0.9   | 0.71    |          |        | 0.815     |         | 26.5         | 30.5 |      |
|                | 16          | 10.7    | 9.4     |          |      | 0.27     | 0.2   | 0.17    |          |        | 0.877     |         | 24.5         | 30.5 |      |
|                | 17          | 9.5     | 9.4     |          |      | 0.27     | 0.2   | 0.17    |          |        | 0.990     |         | 24.5         | 30.5 |      |
|                | 20          | 6.9     | 13.6    |          |      | 0.27     | 0.1   | 0.24    |          |        | 1.984     |         | 40.5         | 40.5 |      |
| Pulpwood Total |             | 2,558.2 | 899.3   |          |      | 23.04    | 45.8  | 16.12   |          |        | 0.352     |         | 27.1         | 29.3 |      |
| Large ST       | 15          | 39.9    | 0.0     | 28.7     | 3.1  | 0.88     | 0.7   | 0.00    | 0.52     | 54.78  | 0.721     | 76.693  | 22.5         | 22.5 | 25.5 |
|                | 16          | 29.9    | 0.0     | 26.0     | 2.9  | 0.75     | 0.5   | 0.00    | 0.47     | 52.14  | 0.871     | 97.332  | 24.5         | 24.5 | 28.8 |
|                | 17          | 29.9    | 0.0     | 34.1     | 4.0  | 0.84     | 0.5   | 0.00    | 0.61     | 72.13  | 1.142     | 134.649 | 29.8         | 29.8 | 32.2 |
|                | 18          | 29.9    | 0.0     | 45.9     | 5.7  | 0.95     | 0.5   | 0.00    | 0.82     | 101.56 | 1.534     | 189.570 | 37.8         | 37.8 | 42.2 |
|                | 19          | 19.9    | 0.0     | 29.6     | 3.7  | 0.70     | 0.4   | 0.00    | 0.53     | 66.93  | 1.485     | 187.405 | 32.5         | 32.5 | 35.5 |
|                | 22          | 10.0    | 0.0     | 20.4     | 3.0  | 0.47     | 0.2   | 0.00    | 0.37     | 52.99  | 2.044     | 296.737 | 32.5         | 32.5 | 35.5 |
| Large ST Total |             | 159.4   | 0.0     | 184.7    | 22.3 | 4.59     | 2.9   | 0.00    | 3.31     | 400.53 | 1.159     | 140.186 | 29.0         | 29.0 | 32.4 |
| Group Total    |             | 2,717.7 | 899.3   | 184.7    | 22.3 | 27.63    | 48.7  | 16.12   | 3.31     | 400.53 | 0.399     | 8.224   | 29.0         | 27.2 | 29.5 |

PINE SAWTIMBER - TONS - MARKED - SMZ

| INCHES<br>D.B.H. | 1 LOG TREES |      | 1.5 LOG TREES |      | 2.0 LOG TREES |      | 2.5 LOG TREES |      | 3.0 LOG TREES |      | 3.5 LOG TREES |      | 4.0 LOG TREES |      | 4.5 LOG TREES |        | 5 LOG TREES |      | TOTALS |      |
|------------------|-------------|------|---------------|------|---------------|------|---------------|------|---------------|------|---------------|------|---------------|------|---------------|--------|-------------|------|--------|------|
|                  | #TREES      | TONS | #TREES        | TONS | #TREES        | TONS | #TREES        | TONS | #TREES        | TONS | #TREES        | TONS | #TREES        | TONS | #TREES        | VOLUME | #TREES      | TONS | #TREES | TONS |
| 10               | -           | -    | -             | -    | -             | -    | -             | -    | -             | -    | -             | -    | -             | -    | -             | -      | -           | -    | -      | -    |
| 12               | -           | -    | -             | -    | -             | -    | 2             | 1    | -             | -    | -             | -    | -             | -    | -             | -      | -           | -    | 2      | 1    |
| 14               | -           | -    | -             | -    | 1             | 1    | 1             | 1    | -             | -    | 1             | 1    | -             | -    | -             | -      | -           | -    | 3      | 3    |
| 16               | -           | -    | 1             | 1    | -             | -    | 3             | 3    | 3             | 4    | 1             | 2    | 2             | 3    | -             | -      | -           | -    | 10     | 13   |
| 18               | -           | -    | -             | -    | -             | -    | -             | -    | -             | -    | 2             | 4    | 4             | 8    | -             | -      | -           | -    | 6      | 12   |
| 20               | -           | -    | -             | -    | -             | -    | -             | -    | 2             | 4    | 3             | 7    | 11            | 29   | 1             | 3      | -           | -    | 16     | 40   |
| 22               | -           | -    | -             | -    | -             | -    | -             | -    | 1             | 3    | 3             | 9    | 1             | 3    | -             | -      | -           | -    | 5      | 14   |
| 24               | -           | -    | -             | -    | -             | -    | -             | -    | 3             | 9    | -             | -    | 4             | 15   | -             | -      | -           | -    | 7      | 25   |
| 26               | -           | -    | -             | -    | -             | -    | 2             | 7    | 1             | 4    | 2             | 9    | 2             | 9    | 2             | 10     | -           | -    | 7      | 28   |
| 28               | -           | -    | -             | -    | -             | -    | -             | -    | -             | -    | 3             | 15   | -             | -    | -             | -      | -           | -    | 3      | 15   |
| 30               | -           | -    | -             | -    | -             | -    | -             | -    | -             | -    | 1             | 6    | -             | -    | -             | -      | -           | -    | 1      | 6    |
| TOTALS           | -           | -    | 1             | 1    | 1             | 1    | 8             | 13   | 10            | 24   | 16            | 52   | 24            | 68   | 3             | 13     | -           | -    | 60     | 159  |

# TIMBER SALE BID FORM

**Highway 53 North Tract– Nevada County, Arkansas**

**Bid Date: Friday, September 13, 2024 @ 10:00 a.m.**

**Send Completed Offer Forms to us:**

**Mail:** P.O. Box 65, Arkadelphia, AR 71923

**Fax:** 870-246-3341

**Hand Deliver:** #4 Executive Circle, Arkadelphia, AR 71923

**E-mail:** [arkadelphia@kingwoodforestry.com](mailto:arkadelphia@kingwoodforestry.com)

I submit the following as an offer for the purchase of all merchantable timber within designated clearcut sale area, plus selectively marked pine sawtimber within SMZ, on the Highway 53 North Tract, further described as Part of N ¼, Section 22, Township 12 South, Range 22 West, clearcut timber sale area containing 55.8 acres, more or less, plus selectively marked pine trees within 10-acre SMZ, more or less, Nevada County, Arkansas (Highway 53 North Tract – see attached maps).

My offer will remain valid through 10:00 a.m. Tuesday, September 17, 2024. Successful bidder will be notified at or before that time by telephone, fax, or e-mail. If my offer is accepted, I am ready, willing, and able to execute a Forest Products Sale Contract within ten (10) business days with payment in full due at time of contract execution.

---

**Send offer form to:** Kingwood Forestry Services, Inc. (**Before 10:00 a.m., Friday, September 13, 2024**)  
P.O. Box 65, Arkadelphia, AR 71923 or fax to 870-246-3341 or  
E-mail completed Bid Form to [Arkadelphia@kingwoodforestry.com](mailto:Arkadelphia@kingwoodforestry.com)

**Highway 53 North Tract Timber Bid:** \$ \_\_\_\_\_  
(All merchantable timber in designated sale area plus selectively marked pine sawtimber in SMZ)

Date: \_\_\_\_\_ Fax #: \_\_\_\_\_

Company: \_\_\_\_\_ Phone #: \_\_\_\_\_  
Printed

Name: \_\_\_\_\_ Name: \_\_\_\_\_  
Printed Signed

Address: \_\_\_\_\_  
Street City, State, Zip

Email: \_\_\_\_\_

