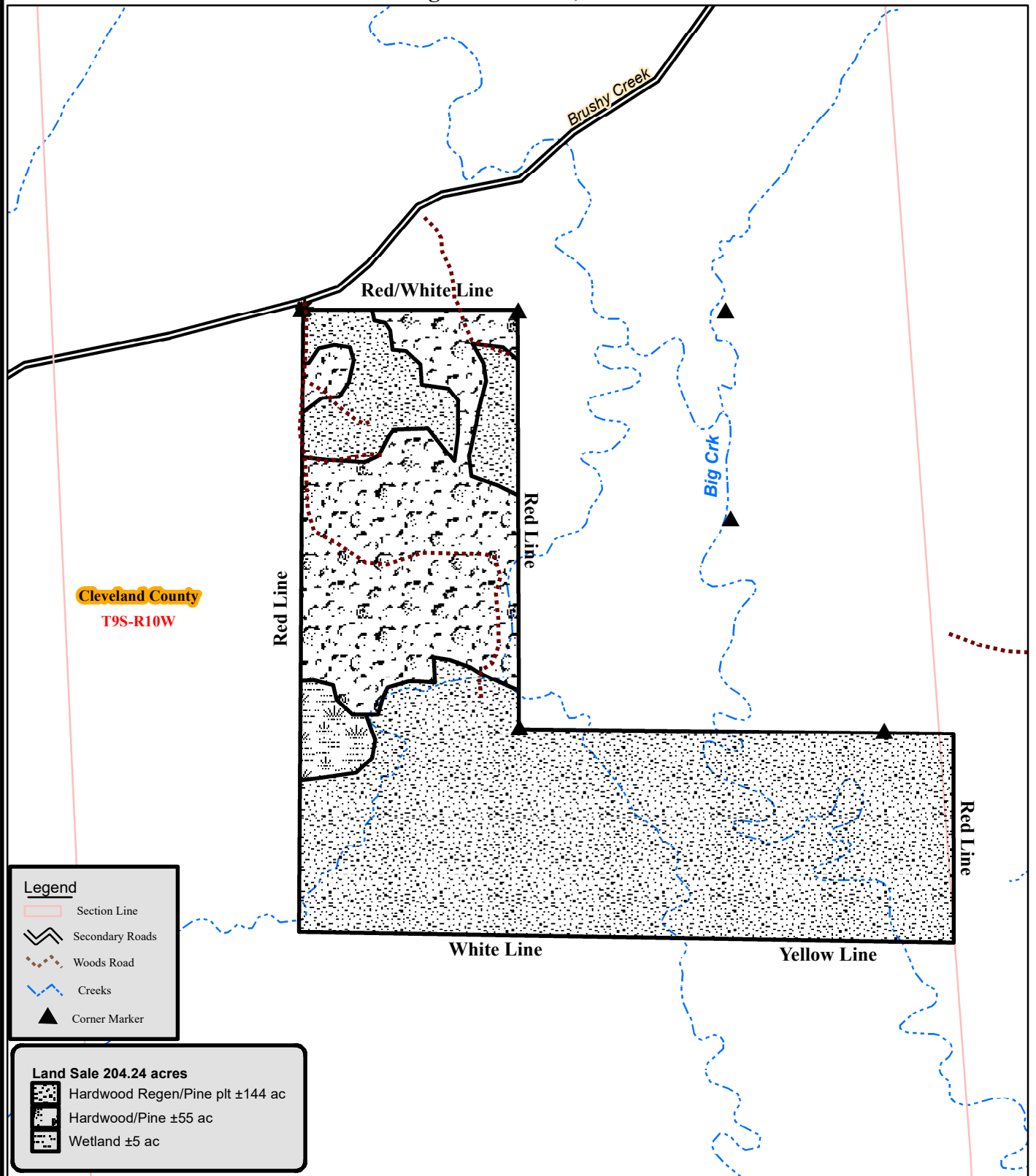
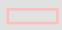






NOTICE OF LAND SALE
"Rison Tract" - Listing #5086
Pt. Sec. 4, T9S, R10W, Cleveland County, Arkansas
Containing 204.24 acres, more or less






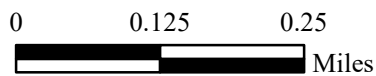
Cleveland County
T9S-R10W

Legend

-  Section Line
-  Secondary Roads
-  Woods Road
-  Creeks
-  Corner Marker

Land Sale 204.24 acres

-  Hardwood Regen/Pine plnt ±144 ac
-  Hardwood/Pine ±55 ac
-  Wetland ±5 ac



Drawn By: BJC